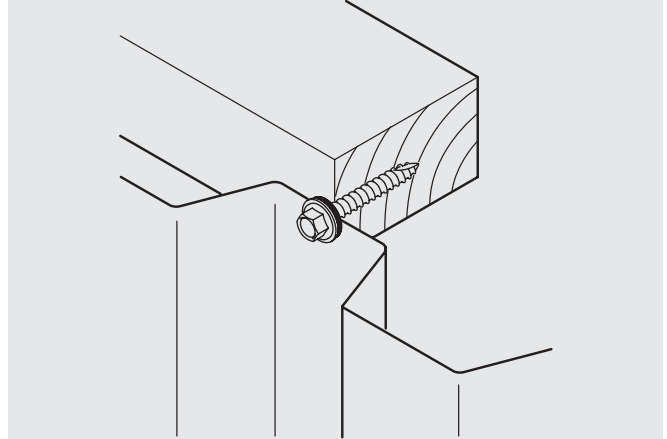
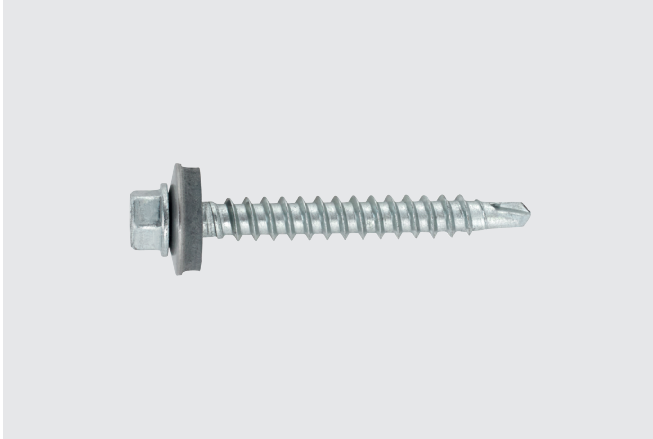


SXW Bi-Met Self-drill Metal to Wood



Features and Benefits

- 304 stainless bi-metal fastener design allows for drilling of steel sheet.
- High ductility reduced delayed embrittlement failure.

Application

- Light metal to wood connections
- Rainscreen framing to wood
- Insulated metal panel to wood

Approvals



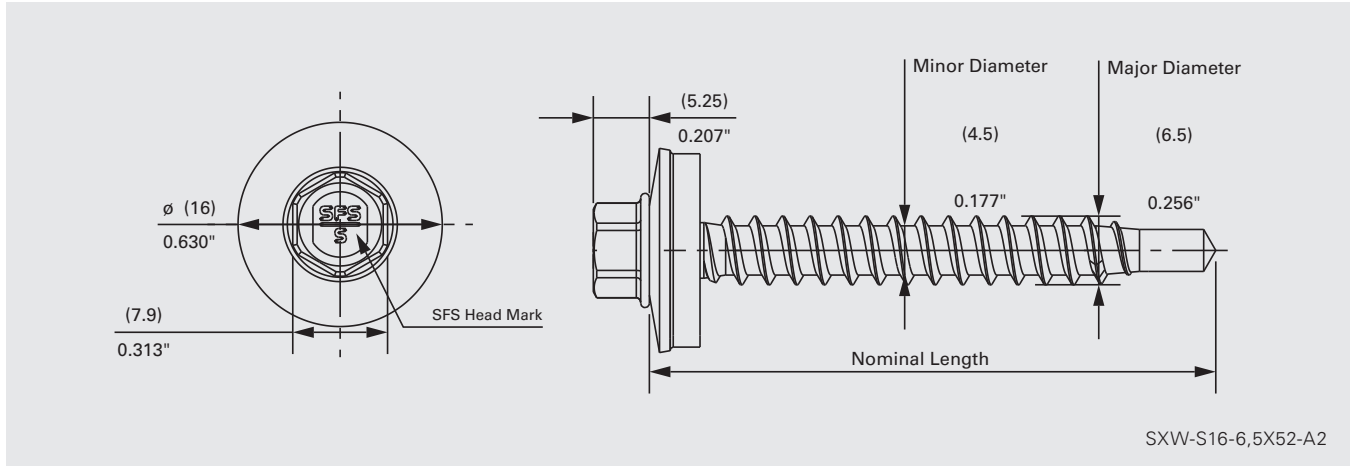
Product Selection

Material No.	Fastener Length		Thread Length*		Description	Carton Wt. (lbs.)	Carton Qty.
	(in)	(mm)	(in)	(mm)			
1123138	2"	52	1-7/8"	47	SXW-S16-6,5x52	6.5	250
1069319	3"	75	2-3/4"	70	SXW-S16-6,5x75	8.6	250
1110537	3-7/8"	99	3-3/8"	85	SXW-S16-6,5x99	11.0	250

*Note - Thread length measured from tip of the drill point to end of threads.



SXW Bi-Met Self-drill Metal to Wood



Product Specifications

Diameter: 1/4" (6.5 mm)
 Threads Per Inch: 10
 Head Style: 5/16" dia HWH AF (7.9 mm)
 Material: 304SS

Drill Point: SD1
 Drill Capacity: 0.075" (1.9 mm) steel max
 Thread Major Dia: 0.256" (6.5 mm)
 Thread Minor Dia: 0.177" (4.5 mm)

Performance Data

Material Strength

Tensile	3750 lbf / 16687 N
Shear	2950 lbf / 13132 N
Torsional	120 lbf·in / 13.6 N·m

Pull Out Strength

Wood, specific gravity 0.45

1-1/2" embedment	867 lbf / 3861 N
2" embedment	1334 lbf / 5933 N

Installation and Application Considerations

Install fasteners with 0–2000 RPM screw gun equipped with depth sensing nose piece.

Fastener length should provide for a minimum of 1" (25.4 mm) penetration into wood substrate.

Use of impact guns or hammer drills is not recommended.

US
 T 800 234 4533
 us.sfs.com

Canada
 T 866 847 5400
 ca.sfs.com

Imperial values are approximate conversions.

All information is non-binding and without guarantee. Before using the products, all specifications and calculations must be checked by a suitably qualified person and local regulations must be observed. This document is subject to revision. We reserve the right to make technical changes. (04/2024, V1.03)