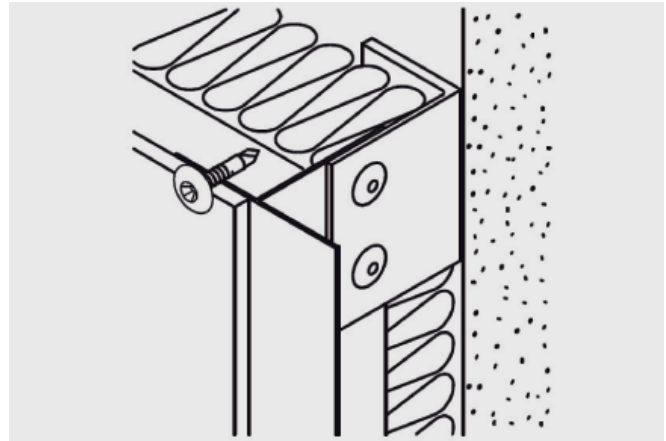


#10-12 Bi-Met 300™ Facade Attachment



Features and Benefits

- Corrosion resistant 300 series stainless
- Bi-Metal fastener design allows for higher drilling capability while maintaining the corrosion resistance properties of stainless.
- Designed with a smaller drill point for superior strength in lighter gauge applications.
- Low profile head provides aesthetic appeal in exposed applications.
- Color matched Vista spray available to match facade panel

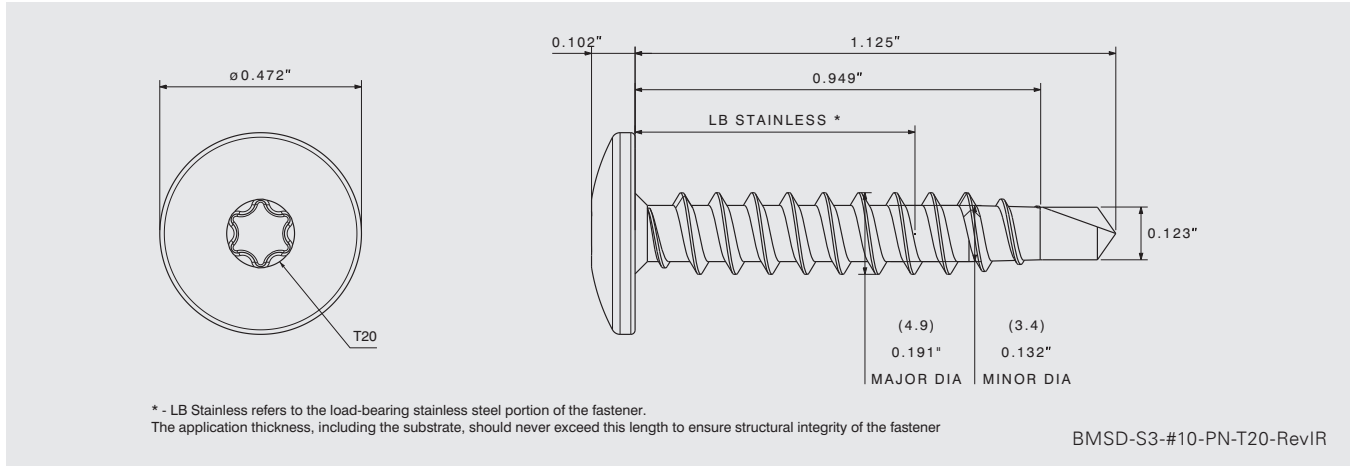
Application

- Light gauge metal connections
- Facade panel to steel or aluminum rail
- Architectural trim attachment

Product Selection

Material No.	Fastener Length		Load Bearing Length		Description	Carton Wt. (lbs.)	Carton Qty.
	(in)	(mm)	(in)	(mm)			
1556758	1-1/8"	29	0.63"	16	BMSD-S3-#10x1-1/8-PN-T20W	30	3,000

#10-12 Bi-Met 300™ Facade Attachment



BMSD-S3-#10-PN-T20-RevIR

Product Specifications

Diameter: #10 (4.9 mm)
 Threads Per Inch: 12
 Head Style: 15/32" Pan Head (11.9 mm)
 Drive: T20W

Material: 304SS
 Drill Point: SD2
 Drill Capacity: 0.036"–0.060" (0.91 mm–1.52 mm)
 Thread Major Dia: 0.191" (4.9 mm)
 Thread Minor Dia: 0.132" (3.4 mm)

Performance Data^{1,2}

Material Strength

Tensile	2798 lbf / 12446 N
Shear	1572 lbf / 6993 N
Torsional	92 lbf·in / 10.39 N·m

Pull Out Strength

16 Ga (1.5 mm)	448 lbf / 1993 N
18 Ga (1.2 mm)	367 lbf / 1632 N
20 Ga (0.9 mm)	258 lbf / 1148 N

Bearing Shear Steel

18 Ga–18 Ga (1.2 mm–1.2 mm)	810 lbf / 3603 N
20 Ga–20 Ga (0.9 mm–0.9 mm)	765 lbf / 3403 N
22 Ga–22 Ga (0.8 mm–0.8 mm)	548 lbf / 2438 N

Pull Out Strength Aluminum

2.5 mm L or T rail (0.98")*	772 lbf / 3434 N
------------------------------------	------------------

¹ Available strengths listed herein are based on internal laboratory testing (5470-17)

² Values are based on grade 40 steel members with minimum yield strength of $F_y = 40$ ksi and minimum tensile strength of $F_u = 55$ ksi

*Values are only valid for aluminum supplied by SFS

Installation and Application Considerations

Install fasteners with 0-2000 RPM screw gun equipped with depth sensing nose piece.

Use of T20W drive bit is required (part # 895280; 25 mm (1") long)