

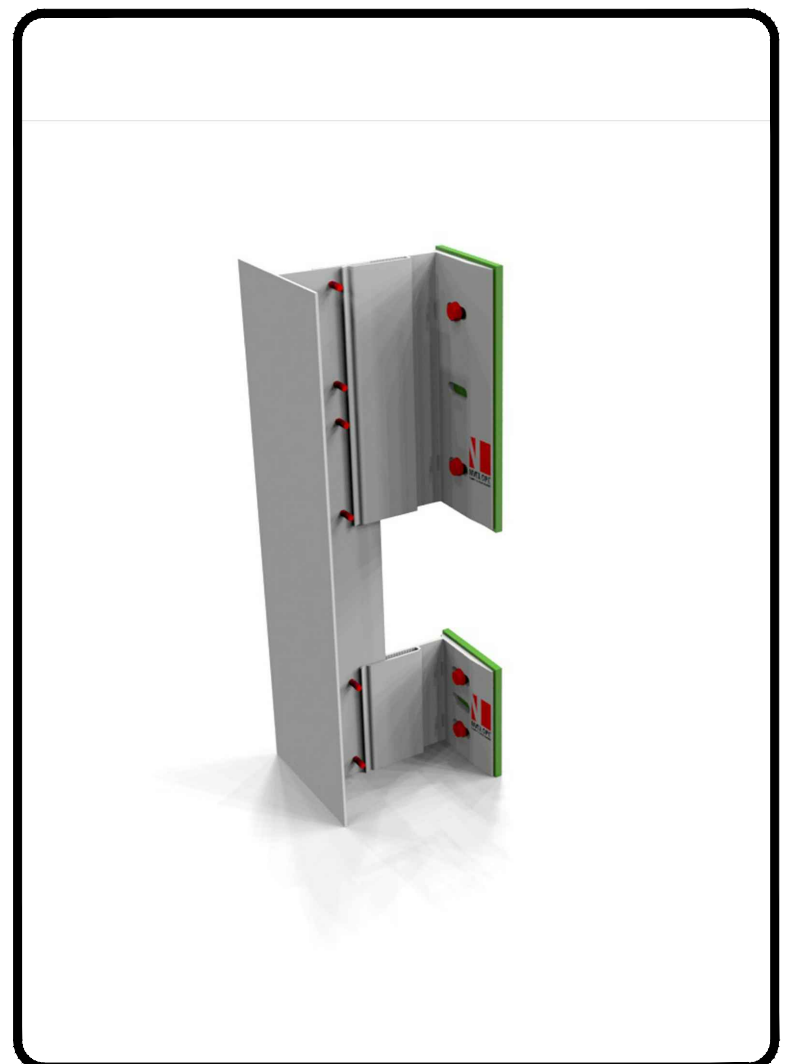
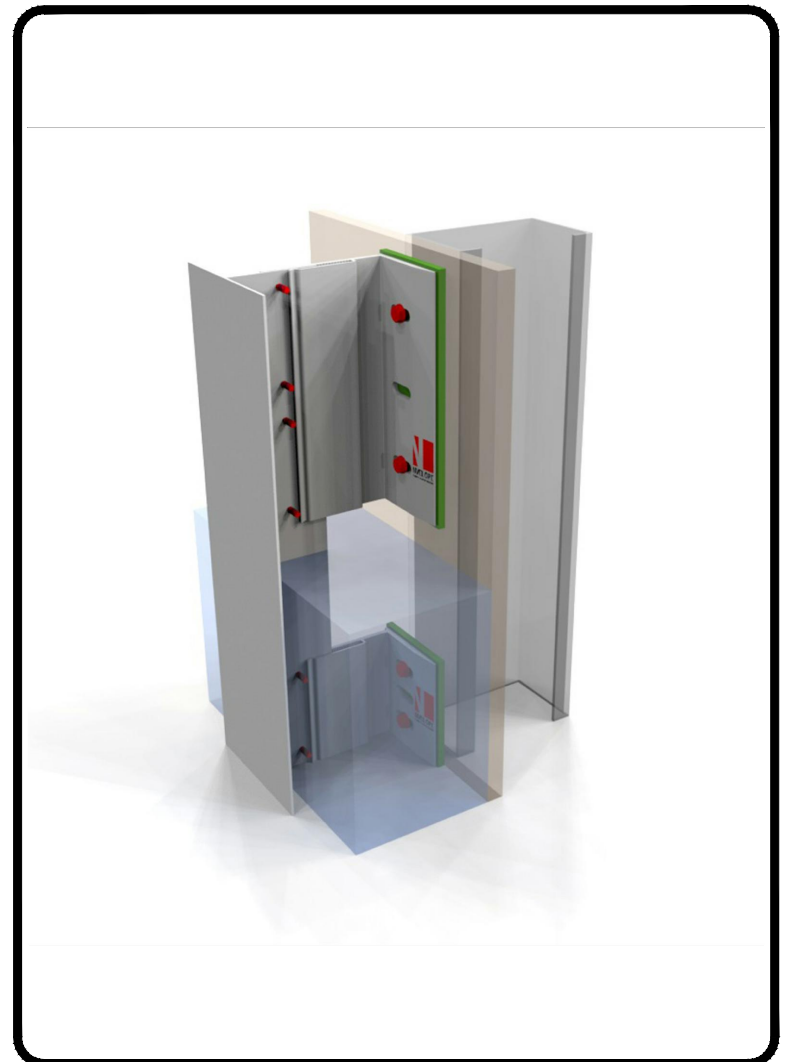
aluminium support system for
rainscreen cladding



NVELOPE NV1 SYSTEM

CONTENTS:

NV1-00	NVELOPE system detail sheet
NV1-01	Tolerances for bracket adjustment
NV1-02	Rail and adaptor overview
NV1-03	System fastener overview
NV1-04	Cladding view locations
NV1-05	Section – Base of cladding
NV1-06	Section – Horz. panel joint
NV1-07	Section – Rail termination with slip connection
NV1-08	Section – Top of cladding
NV1-09	Section – Window sill
NV1-10	Section – Window head
NV1-11	Plan – Window jamb
NV1-12	Plan – Internal corner
NV1-13	Plan – Vertical panel joint
NV1-14	Plan – External corner
NV1-15	Plan – External corner with corner rail
NV1-16	Section – Bracket install guide



SFS Group USA, Inc.
Division Construction
1045 Spring Street
US-Wyomissing, PA 19610
T 844-Nvelope (683 5673)
us.nvelope@sfs.com
us.sfs.com

SFS - Canada
40 Innovation Drive
Dundas, ON L9H 7P3
T +1 905 689 5401
ca.info@sfs.com
ca.sfs.com

The following detail set was drawn
and scaled using millimeter units

SHEET

NV1-01

SHEET TITLE

Tolerances for Bracket Adjustment



NV1 DETAIL SET

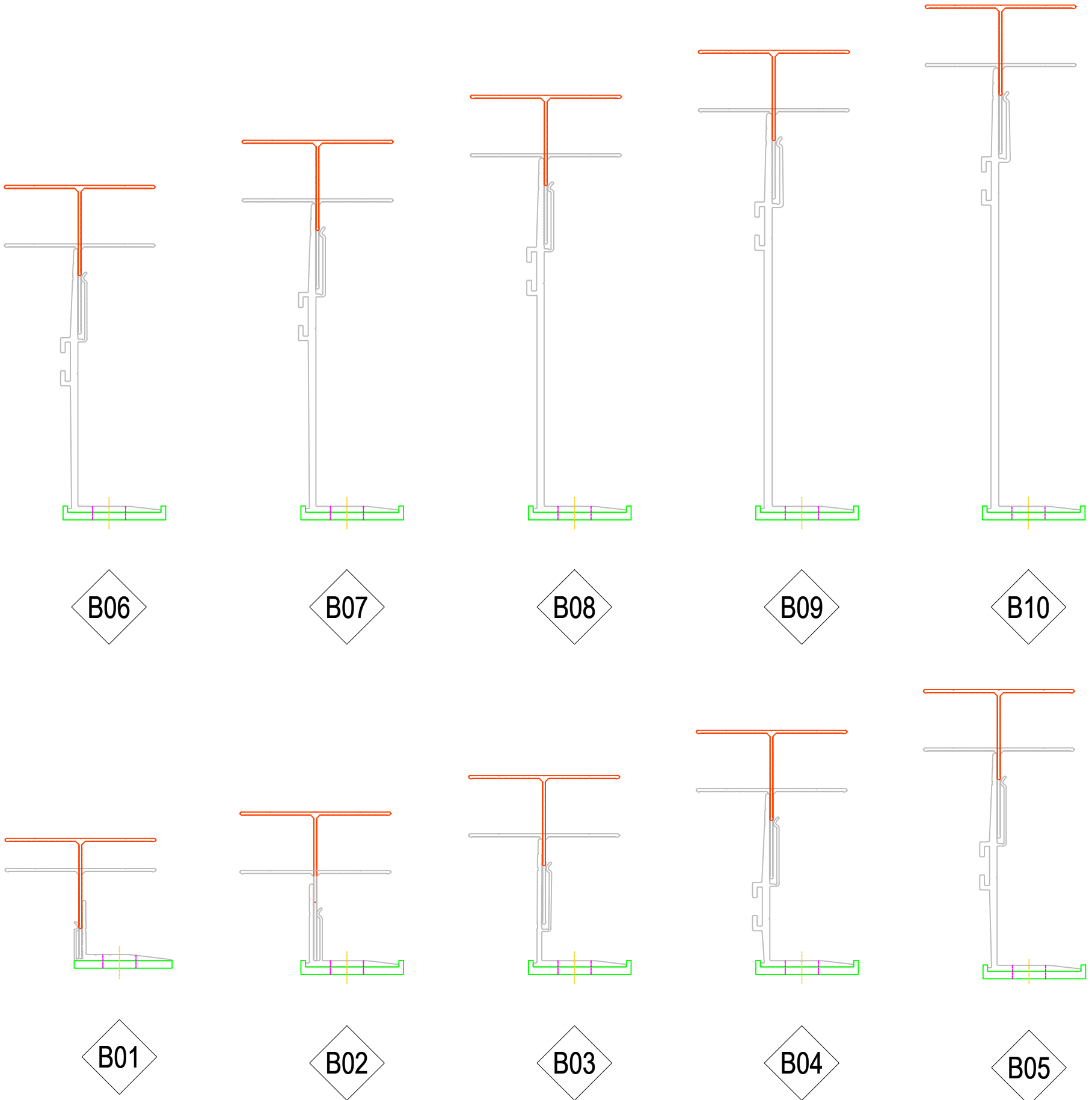
REVISION
IR

DATE
03.23.2022

SCALE
1:3

NO:	BRACKET HEIGHT	MIN CAVITY	MAX CAVITY
B01	1.57" (40mm)	1.85" (47mm)	2.64" (67mm)
B02	2.36" (60mm)	2.44" (62mm)	4.01" (102mm)
B03	3.54" (90mm)	3.62" (92mm)	5.19" (132mm)
B04	4.72" (120mm)	4.80" (122mm)	6.37" (162mm)
B05	5.91" (150mm)	5.98" (152mm)	7.56" (192mm)
B06	7.09" (180mm)	7.16" (182mm)	8.74" (222mm)
B07	8.27" (210mm)	8.35" (212mm)	9.92" (252mm)
B08	9.45" (240mm)	9.52" (242mm)	11.10" (282mm)
B09	10.63" (270mm)	10.70" (272mm)	12.26" (312mm)
B10	11.81" (300mm)	11.89" (302mm)	13.46" (342mm)

Brackets come in single or double widths and are made for specific substrates. See installation instructions for more details.



SHEET

NV1-02

SHEET TITLE

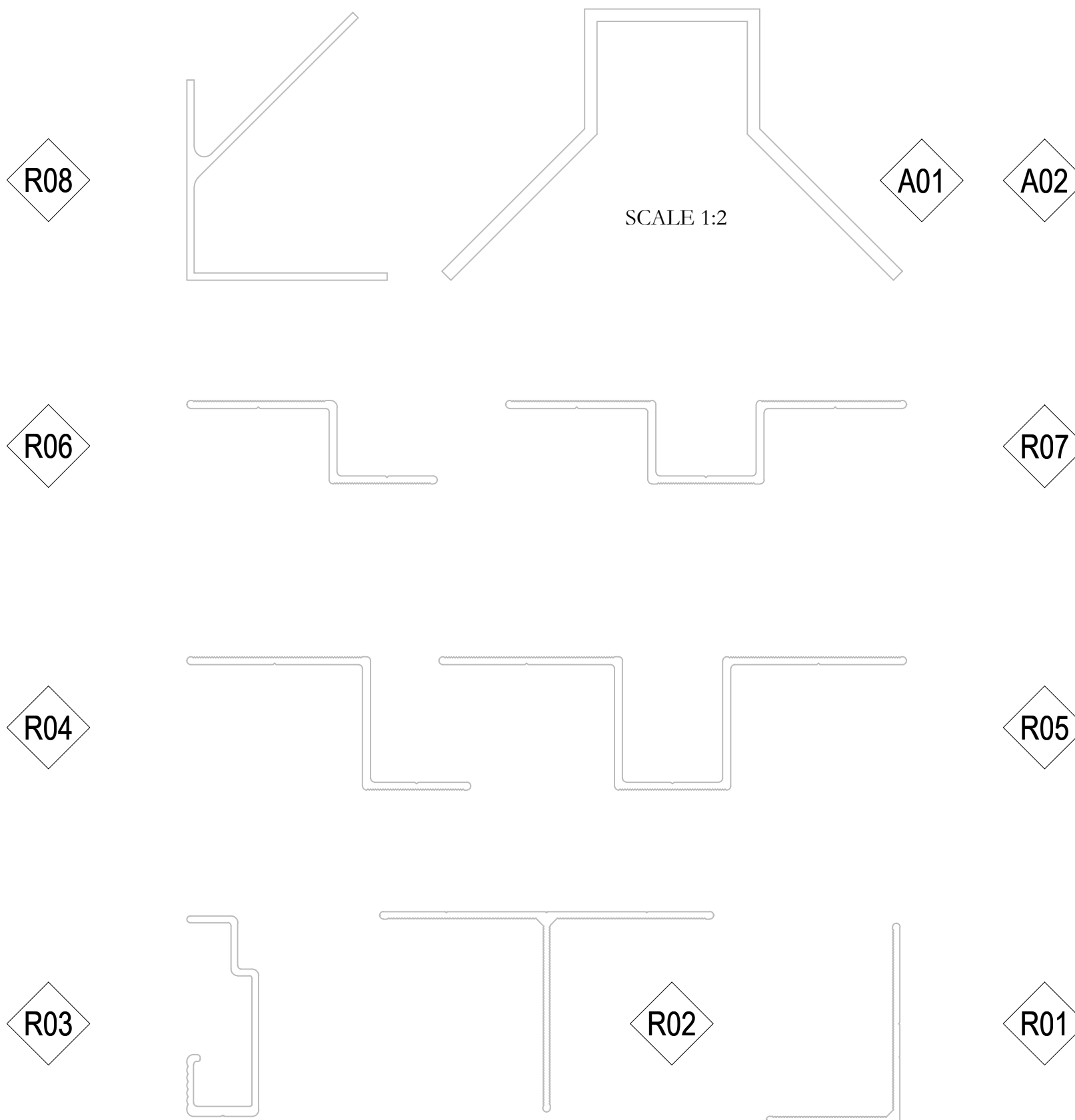
Rail and Adaptor Overview



NV1 DETAIL SET

REVISION IR	DATE 03.23.2022	SCALE 1:1:5
----------------	--------------------	----------------

NO:	DESCRIPTION	HEIGHT	FACE WIDTH (S)	THICKNESS	LENGTH
R01	L Rail	2 3/8" (60mm)	1 1/2" (40mm)	0.087" (2.2mm)	9' 10 1/8" (3m)
R02	T Rail	2 3/8" (60mm)	3 7/8" (100mm)	0.087" (2.2mm)	9' 10 1/8" (3m)
R03	NV3 Rail	2 3/8" (60mm)	27/32" (21.5mm)	0.079" (2mm)	9' 10 1/8" (3m)
R04	1 1/2" Zed Rail	1 1/2" (40mm)	2 1/8" & 1 1/8" (55mm / 30mm)	0.094" (2.4mm)	9' 10 1/8" (3m)
R05	1 1/2" Omega Rail	1 1/2" (40mm)	2 1/8" & 1 1/8" (55mm / 30mm)	0.094" (2.4mm)	9' 10 1/8" (3m)
R06	1" Zed Rail	1" (25mm)	1 3/4" & 1 1/8" (45mm / 30mm)	0.094" (2.4mm)	9' 10 1/8" (3m)
R07	1" Omega Rail	1" (25mm)	1 3/4" & 1 1/8" (45mm / 30mm)	0.094" (2.4mm)	9' 10 1/8" (3m)
R08	Corner Rail	2 13/16" (71mm)	2 3/8" & 2 3/8" (60mm / 60mm)	0.087" (2.2mm)	9' 10 1/8" (3m)
A01	Single Corner Bracket	4 1/4" (108mm)	2 3/4" (70mm)	0.197" (5mm)	2 15/16" (75mm)
A02	Double Corner Bracket				5 29/32" (150mm)



SHEET

NV1-03

SHEET TITLE

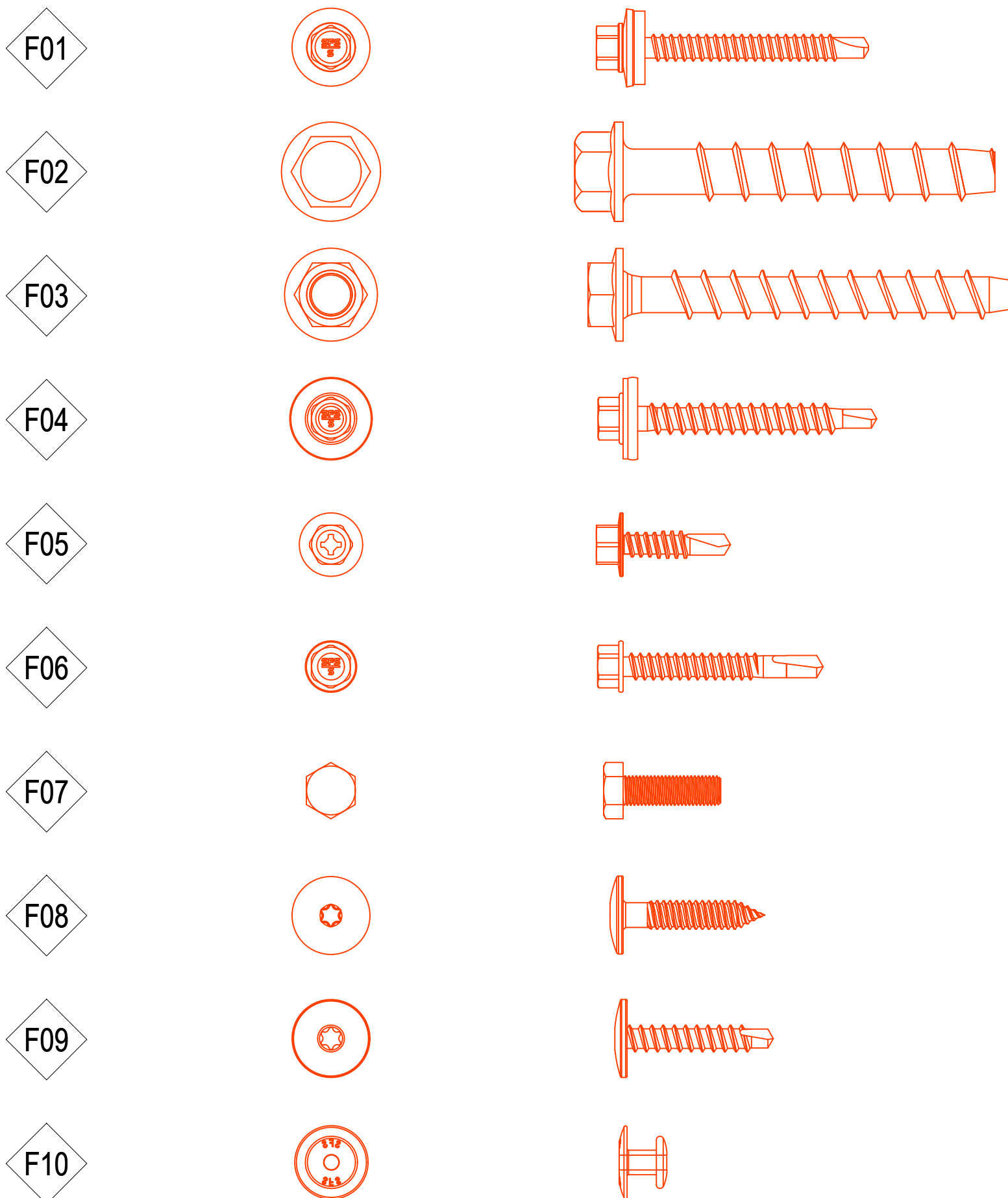
System Fastener Overview



NV1 DETAIL SET

REVISION IR	DATE 03.23.2022	SCALE 1:1
----------------	--------------------	--------------

NO:	TYPICAL USE & APPLICATION	LENGTH	DIAMETER	HEAD/DRIVE	POINT STYLE
F01	Nvelope Bracket to Steel Stud Framing	2" (50mm)	#14 (6.5mm)	5/16" (8mm) HWH	SD2 Self Drill
F02	Nvelope Bracket to CMU Substrate	3" (75mm)	3/8" (10mm)	9/16" (14mm) HWH	Type B
F03	Nvelope Bracket to Concrete Wall	3 1/8" (80mm)	3/8" (10mm)	33/64" (13mm) HWH	Type B
F04	Nvelope Bracket to Wood Stud Framing	2 1/16" (52mm)	#14" (6.5mm)	5/16" (8mm) HWH	SD2 Self Drill
F05	Bracket to Rail & Rail to Rail Connections	7/8" (22mm)	#12 (5.5mm)	5/16" (8mm) HWH	SD3 Self Drill
F06	NV3 Hanger Securing Screw	1 5/8" (41mm)	#12 (5.4mm)	5/16" (8mm) HWH	SD3 Self Drill
F07	NV3 Hanger Adjusting Screw	3/4" (20mm)	1/4" (6mm)	3/8" (10mm) HH	NA
F08	Facade Panel to Rail	1 1/8" (29mm)	#12 (5.8mm)	5/8" (16mm) Dome	TYPE A
F09	Facade Panel to Rail	1 3/16" (30mm)	#12 (5.3mm)	5/8" (16mm) Dome	SD2 Self Drill
F10	Facade Panel to Rail	23/32" (18mm)	3/16" (5mm)	RIVET	NA



SHEET

NV1-04

SHEET TITLE

Cladding View Locations

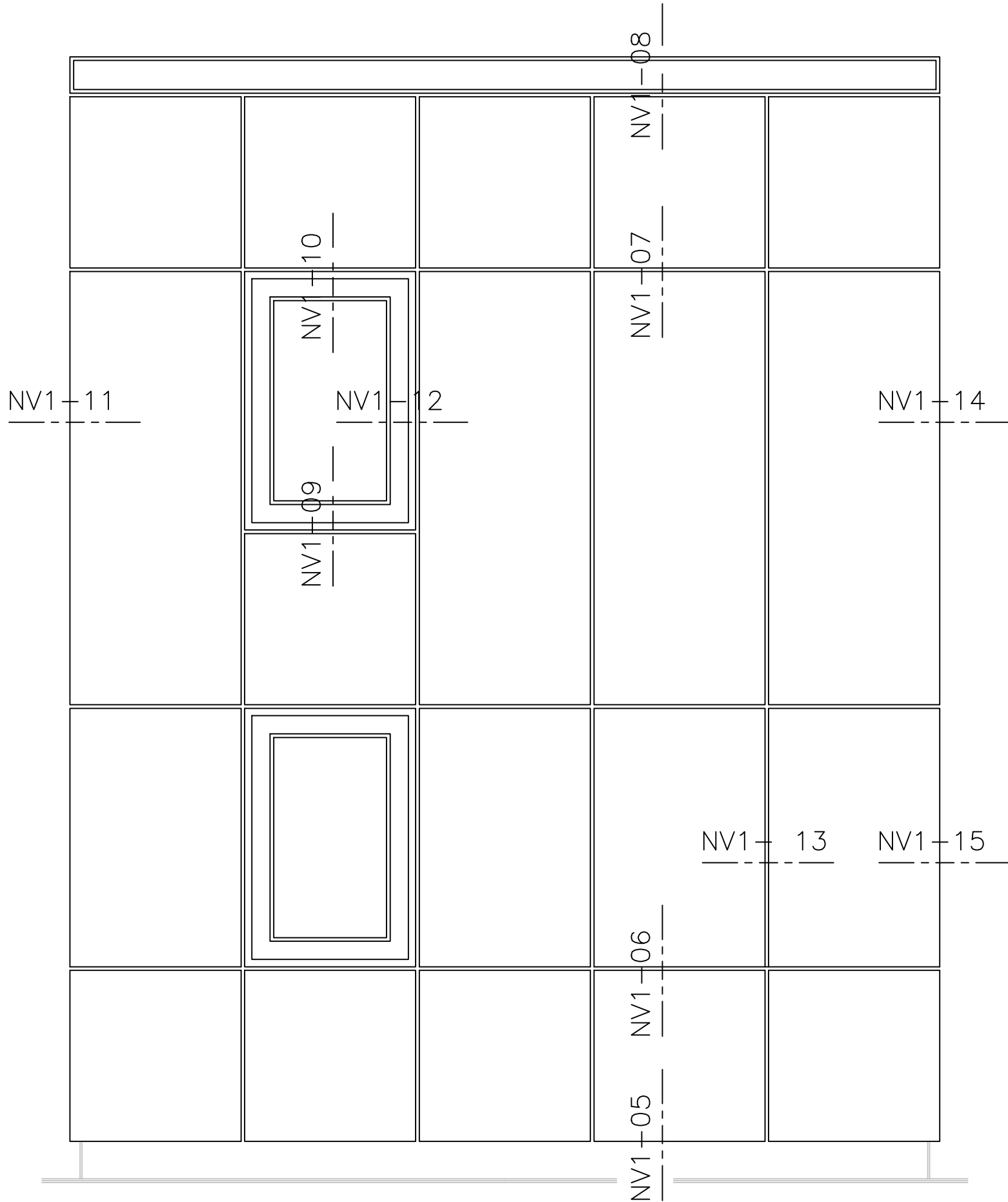


NV1 DETAIL SET

REVISION
IR

DATE
03.23.2022

SCALE
1:34



SHEET

NV1-05

SHEET TITLE

Section - Base of Cladding

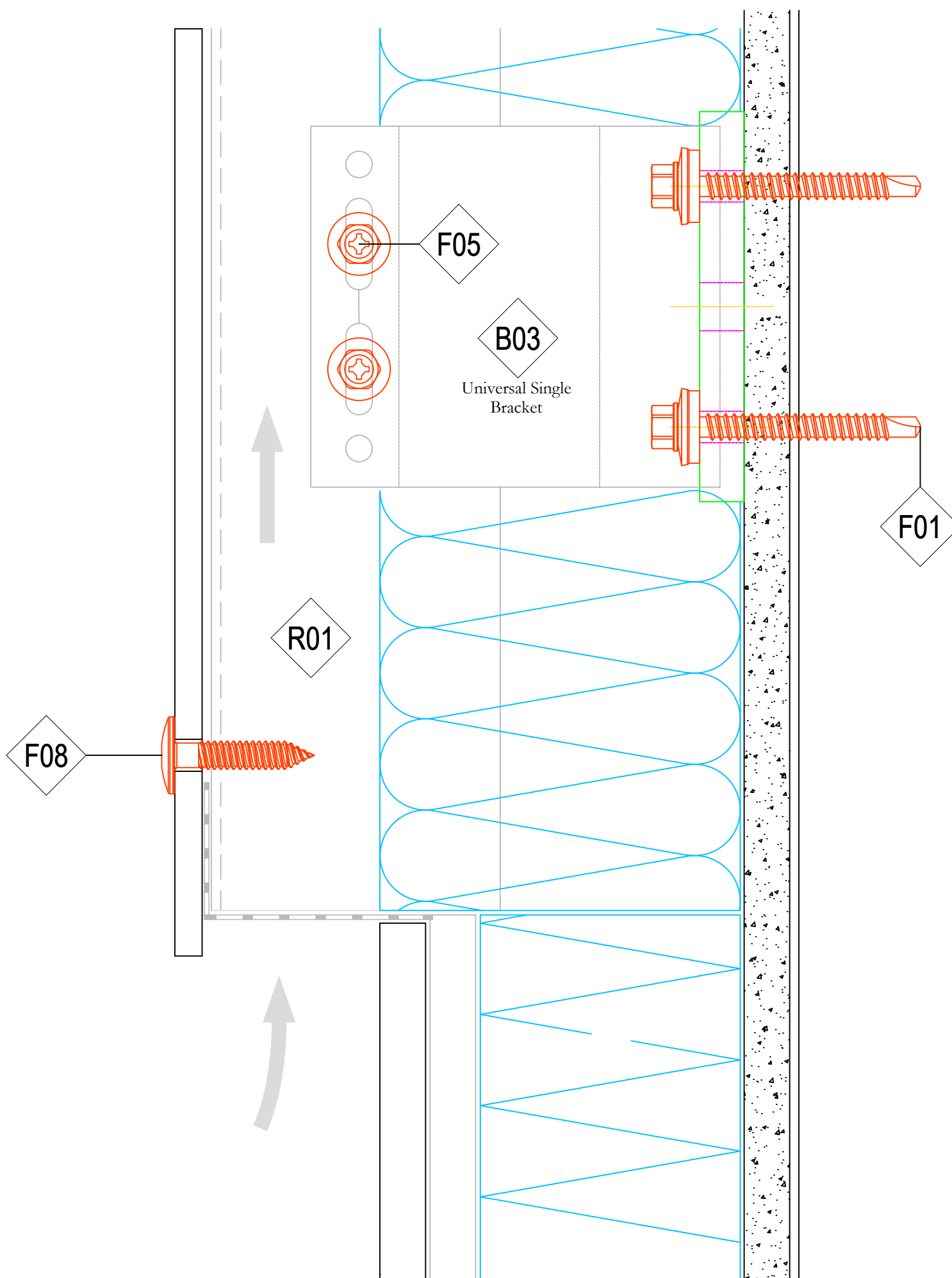


NV1 DETAIL SET

REVISION
IR

DATE
03.23.2022

SCALE
1:1



SHEET

NV1-06

SHEET TITLE

Section - Horizontal Panel Joint

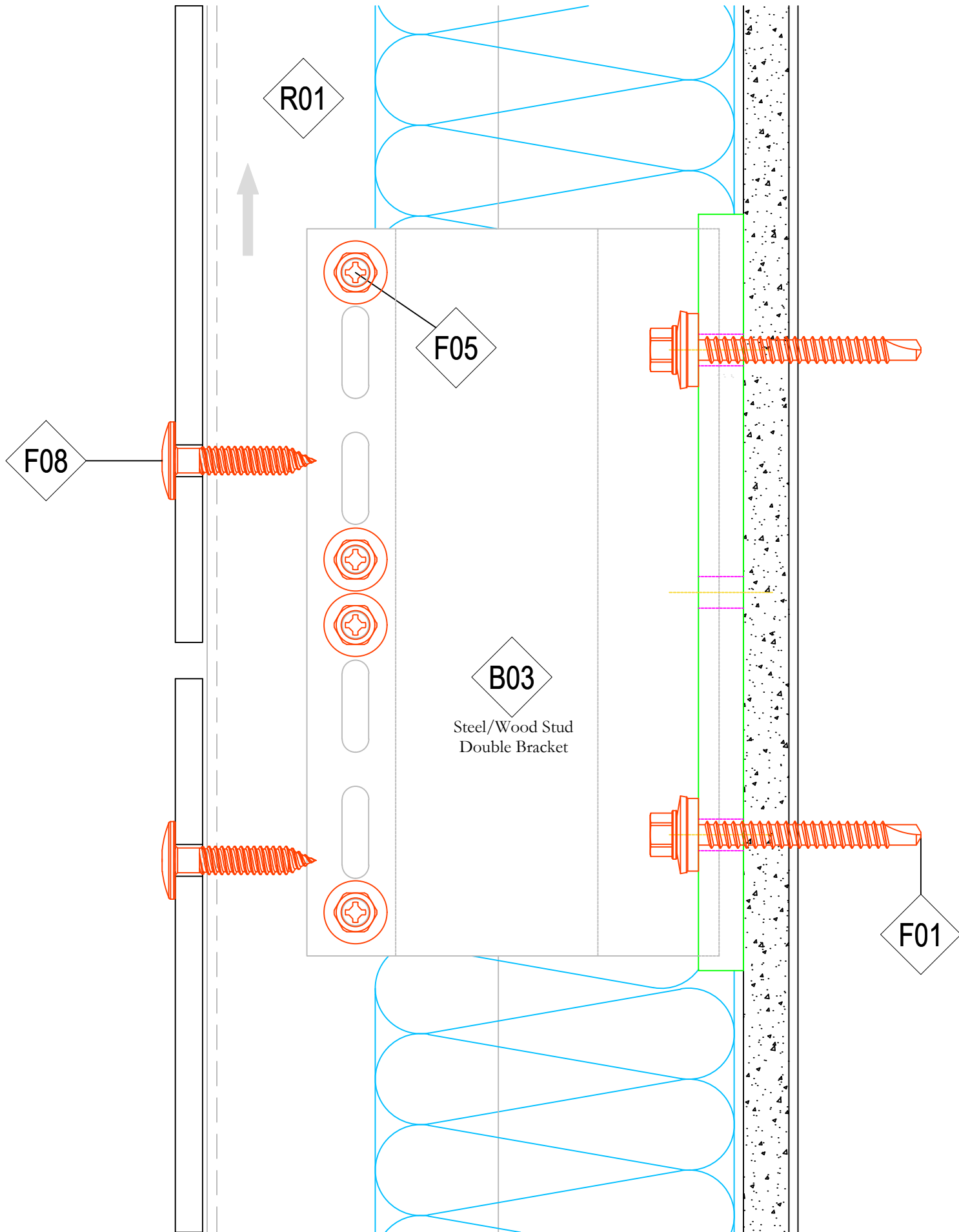


NV1 DETAIL SET

REVISION
IR

DATE
03.23.2022

SCALE
1:1



SHEET

NV1-07

SHEET TITLE

Section - Rail Termination with Slip Connect

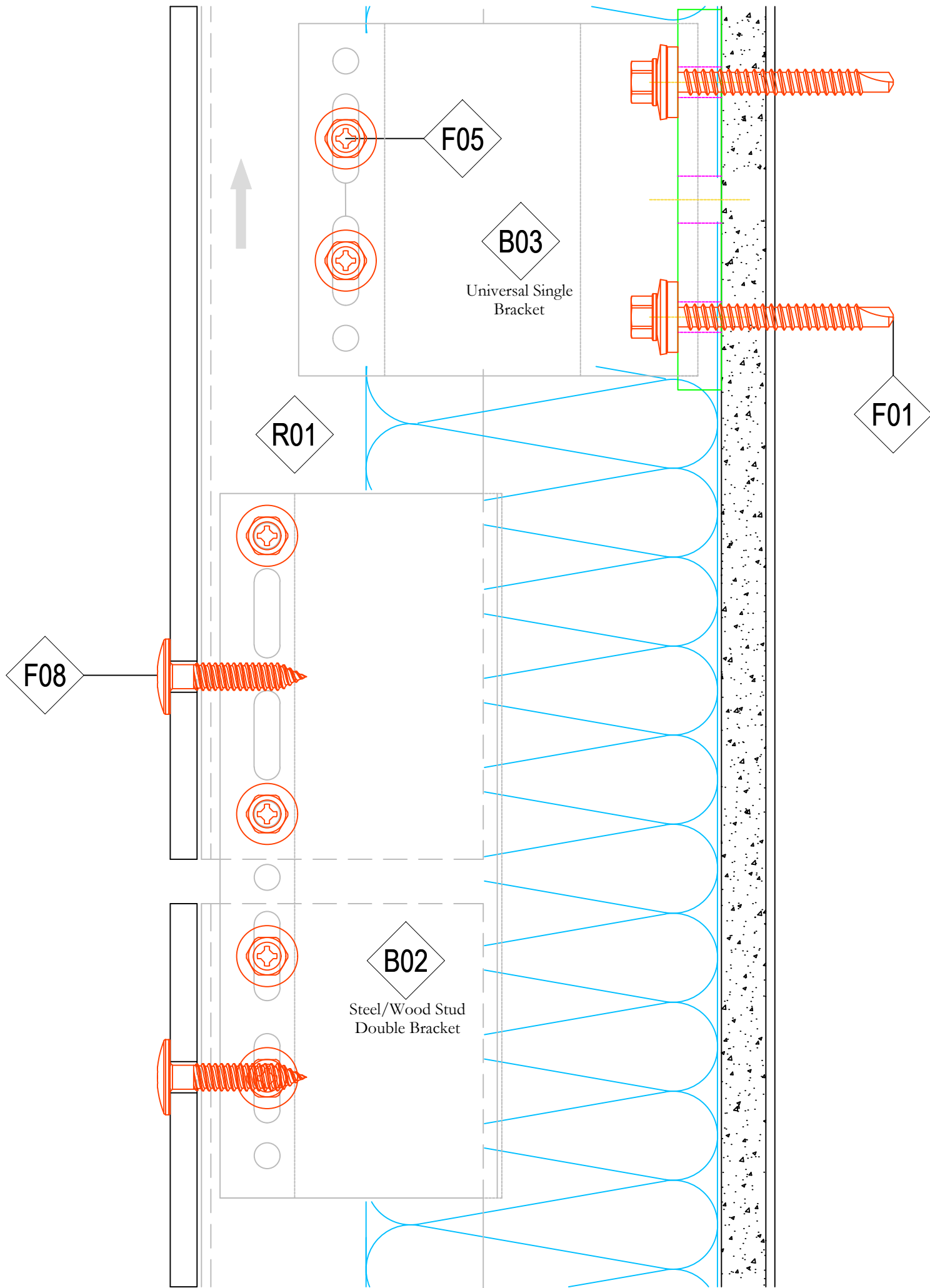


NV1 DETAIL SET

REVISION
IR

DATE
03.23.2022

SCALE
1:1



SHEET

NV1-09

SHEET TITLE

Section - Window Sill

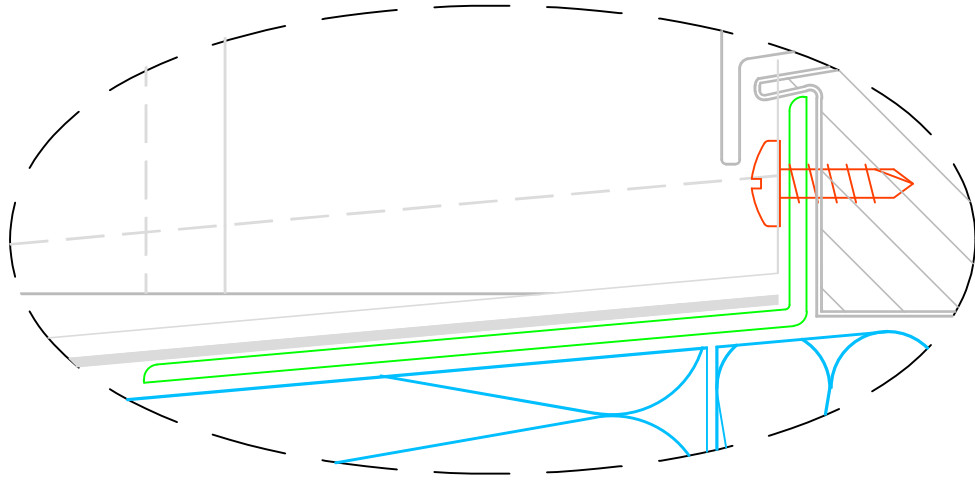


NV1 DETAIL SET

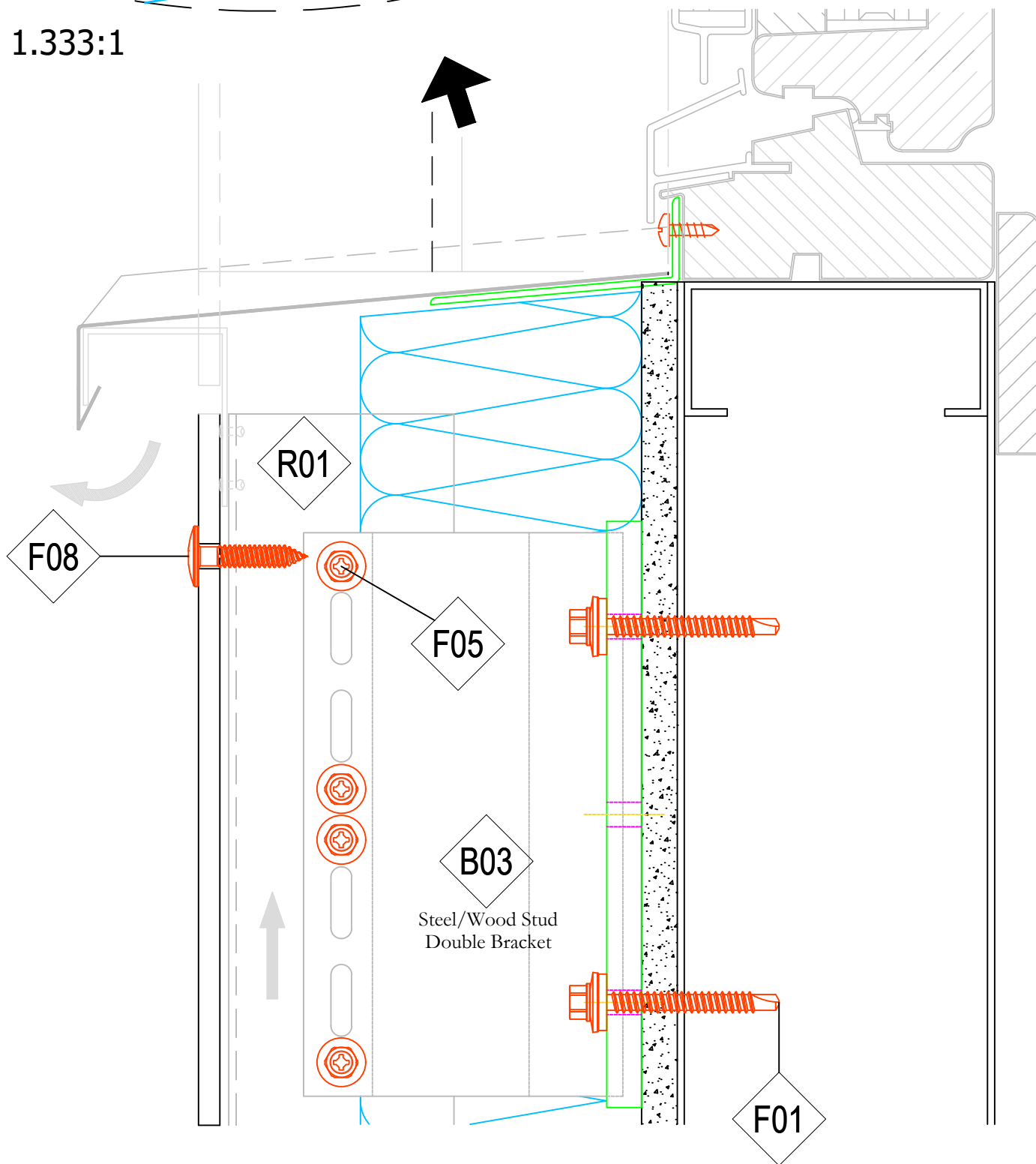
REVISION
IR

DATE
03.23.2022

SCALE
1:1.5



SCALE 1.333:1



SHEET

NV1-10

SHEET TITLE

Section - Window Head

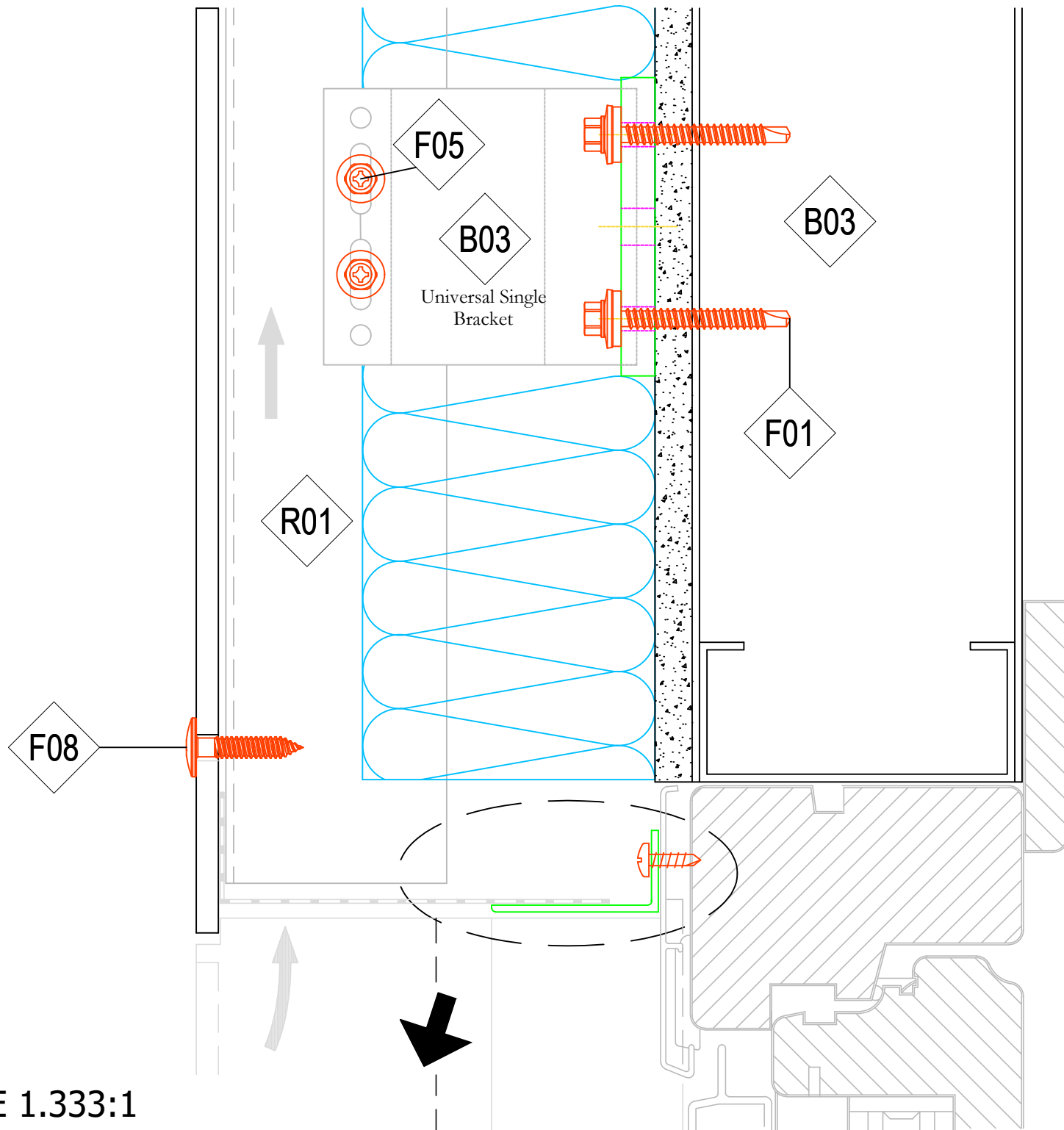


NV1 DETAIL SET

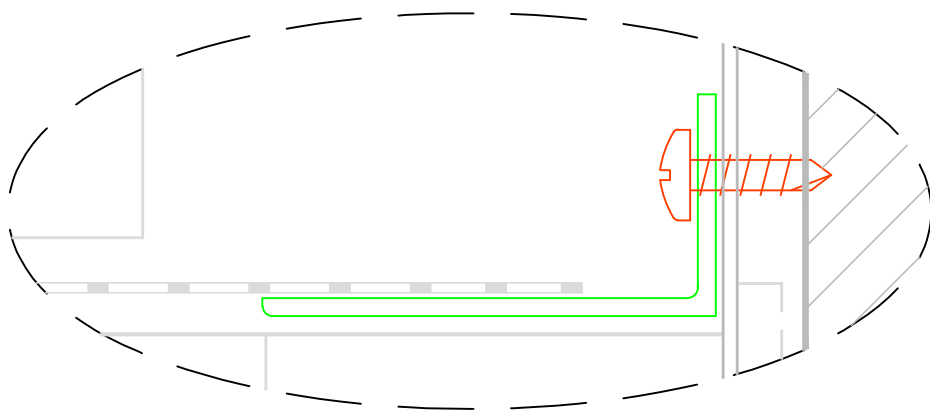
REVISION
IR

DATE
03.23.2022

SCALE
1:1.5



SCALE 1.333:1



SHEET

NV1-11

SHEET TITLE

Plan - Window Jamb

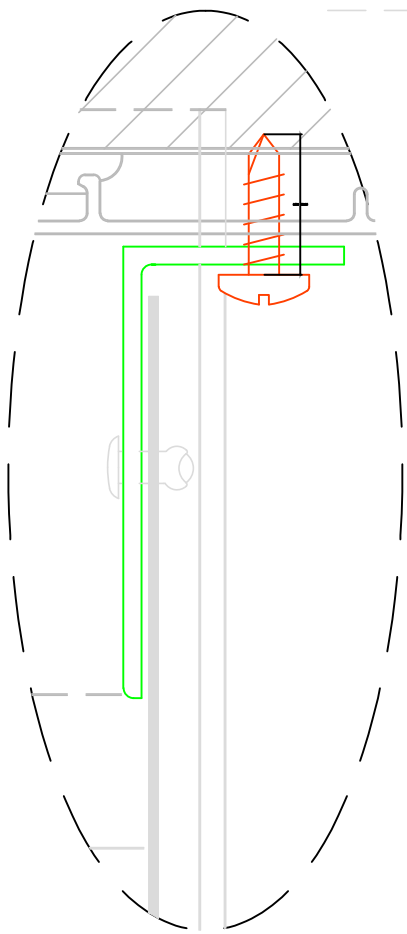
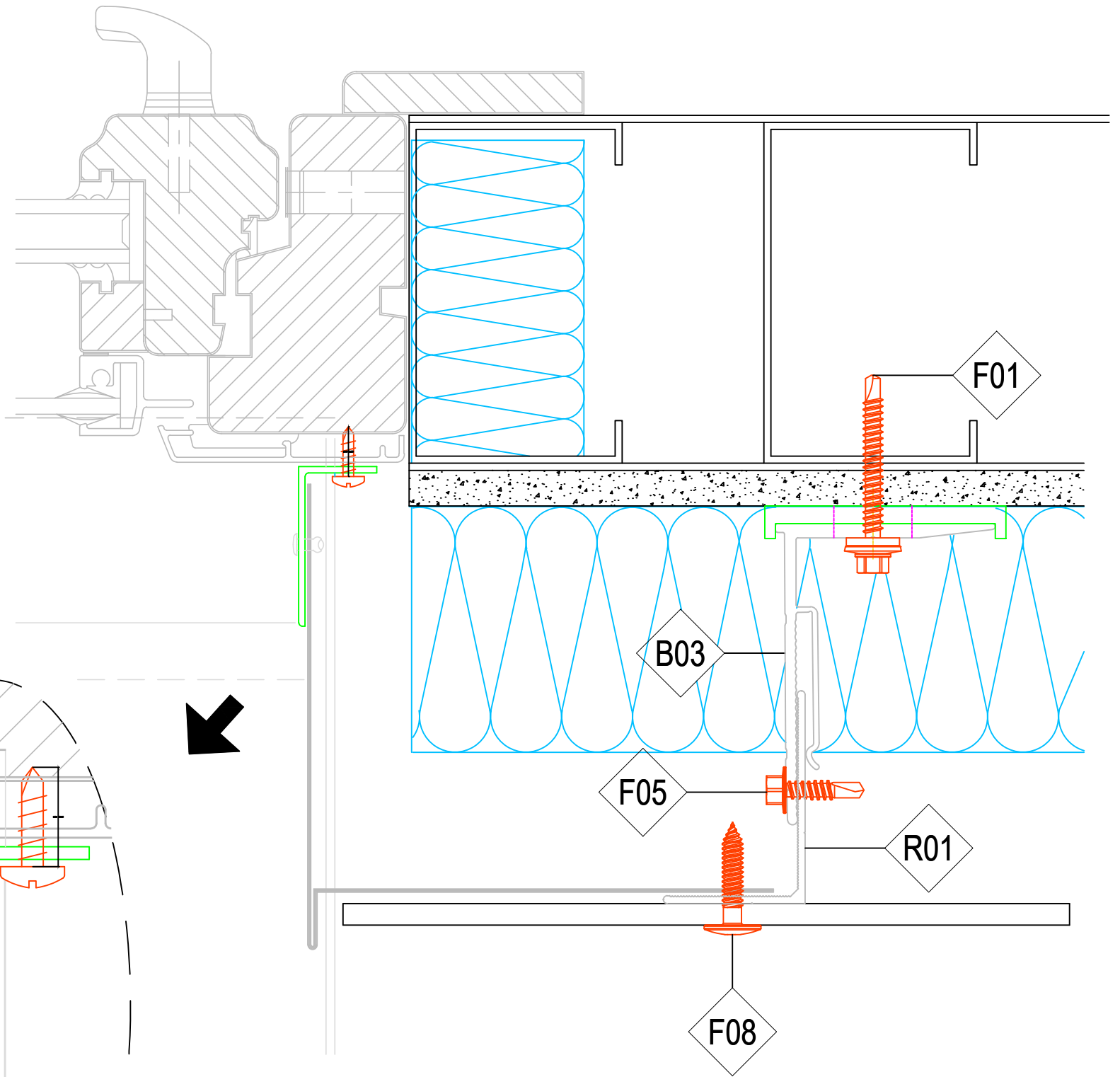


NV1 DETAIL SET

REVISION
IR

DATE
03.23.2022

SCALE
1:1.5



SCALE 1.333:1

SHEET

NV1-12

SHEET TITLE

Plan - Internal Corner

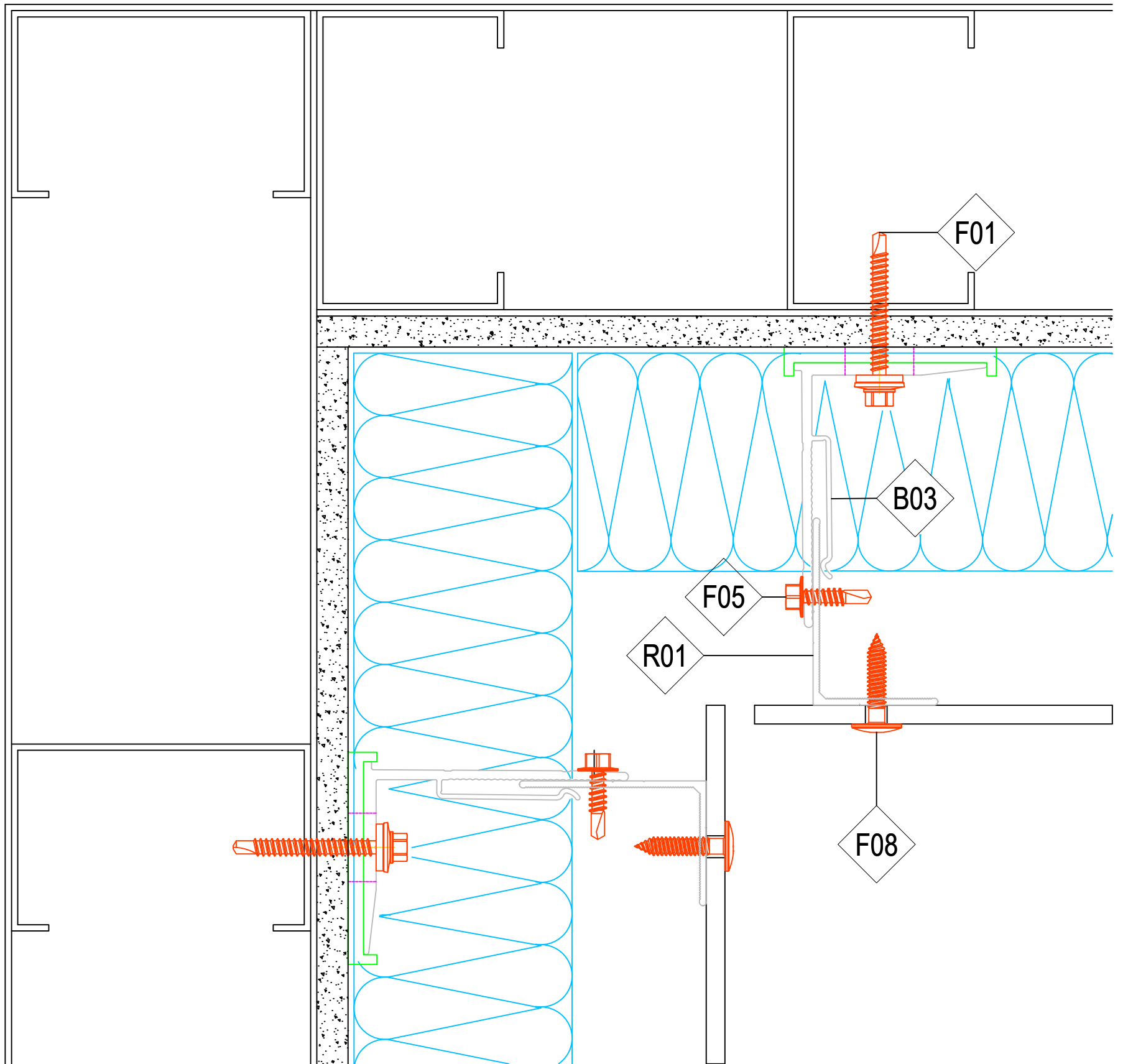


NV1 DETAIL SET

REVISION
IR

DATE
03.23.2022

SCALE
1:1.5



SHEET

NV1-13

SHEET TITLE

Plan - Vertical Panel Joint

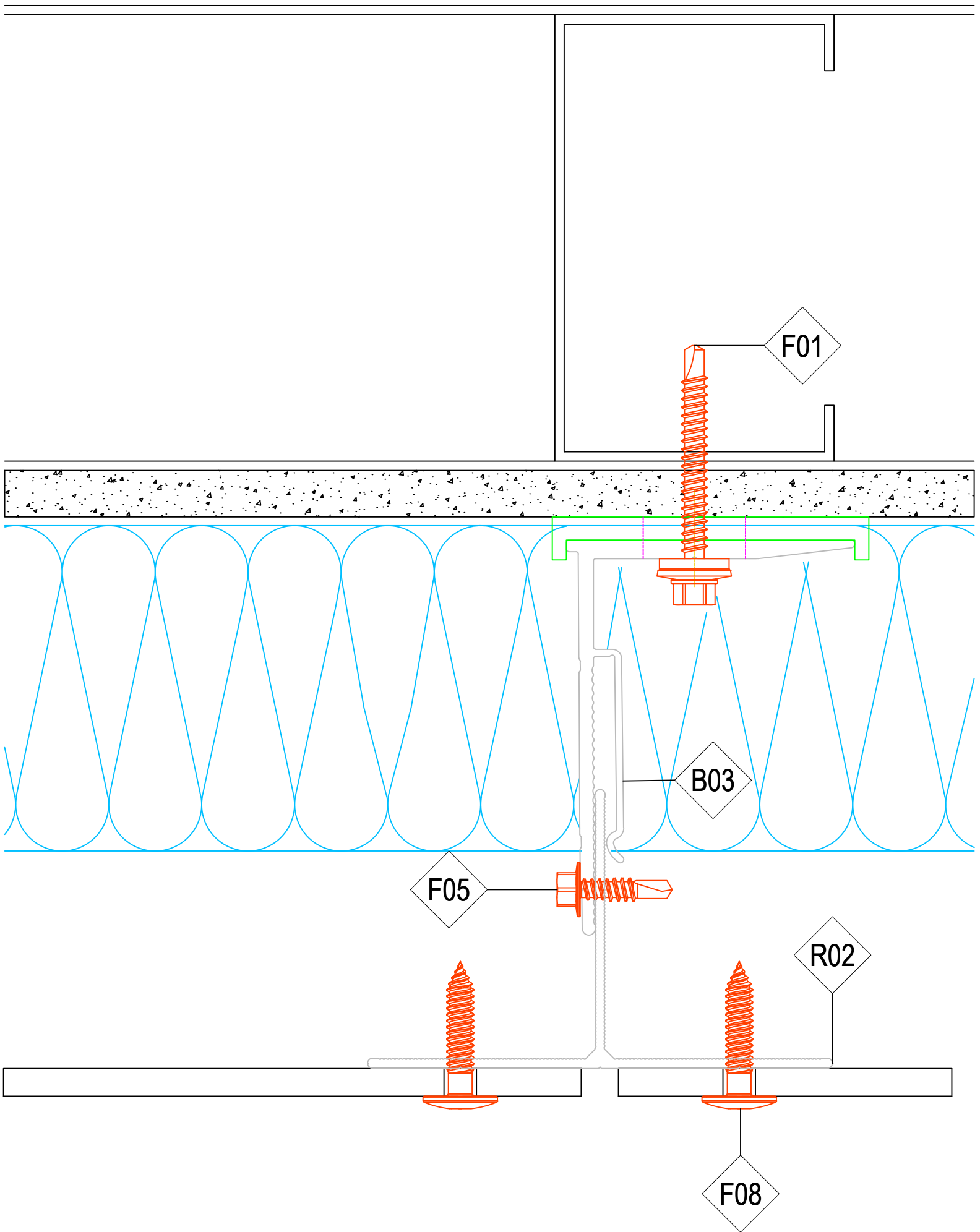


NV1 DETAIL SET

REVISION
IR

DATE
03.23.2022

SCALE
1:1



SHEET

NV1-14

SHEET TITLE

Plan - External Corner

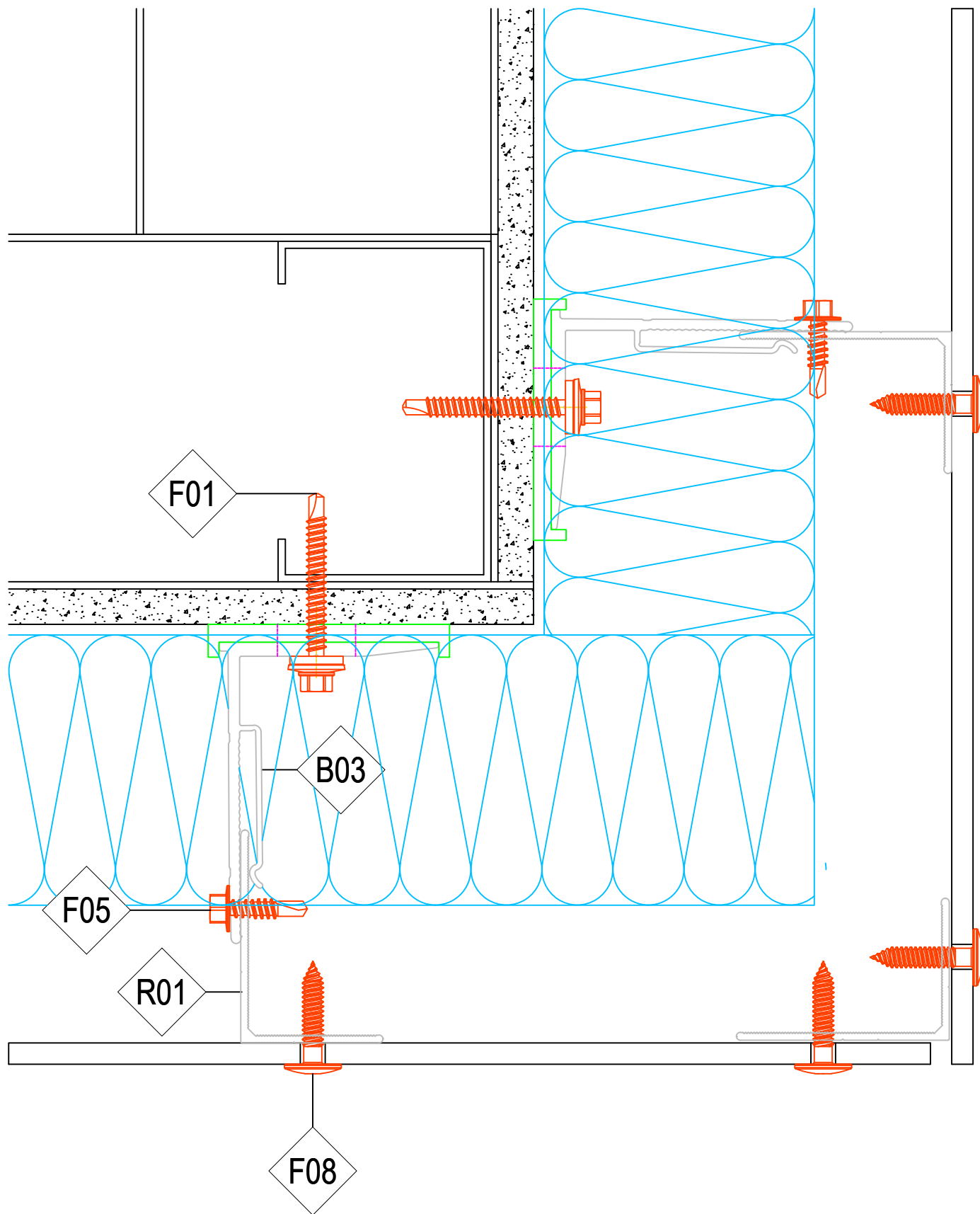


NV1 DETAIL SET

REVISION
IR

DATE
03.23.2022

SCALE
1:1.5



SHEET

NV1-15

SHEET TITLE

Plan - Ext. Corner with Corner Rail

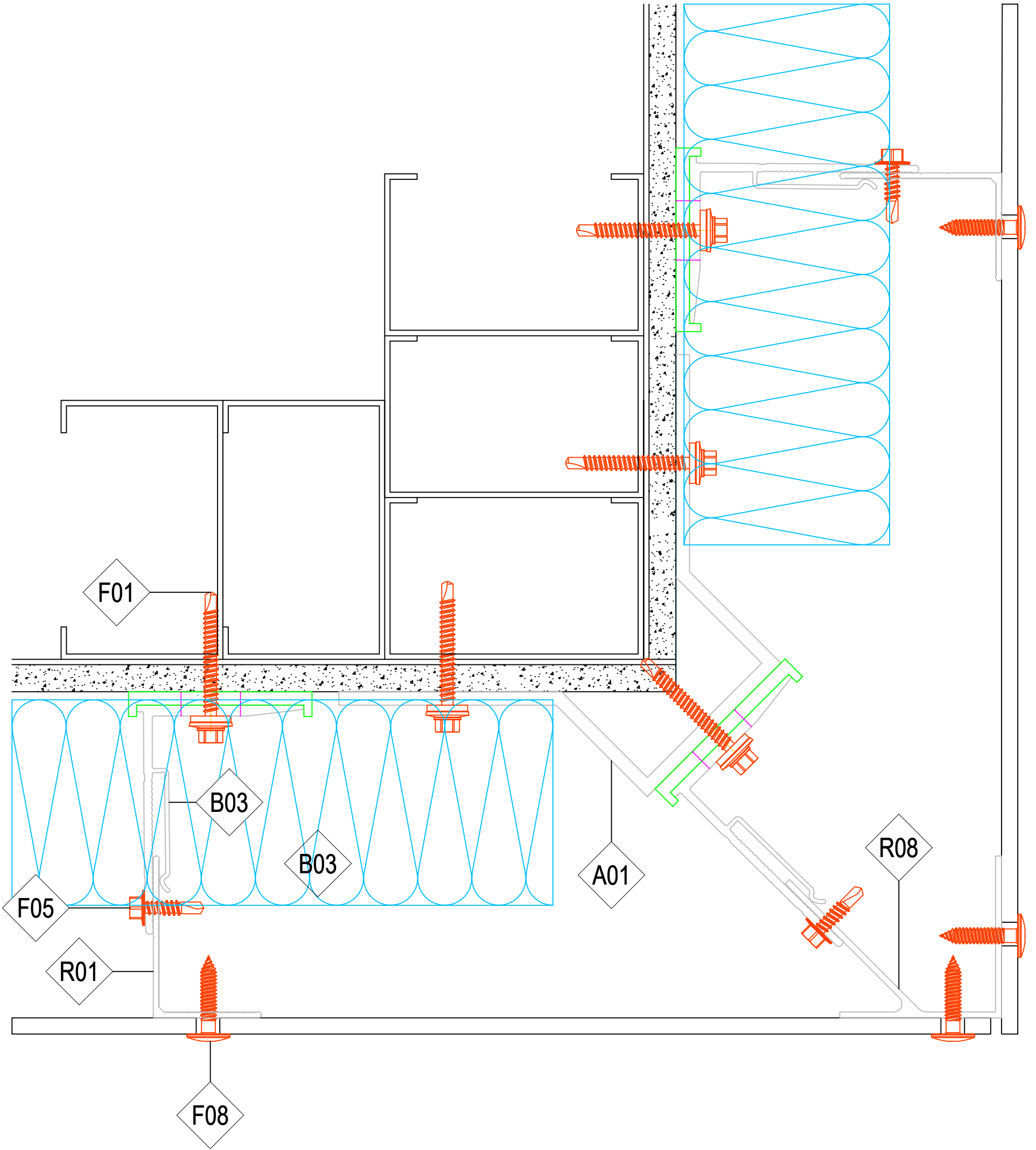


NV1 DETAIL SET

REVISION
IR

DATE
03.23.2022

SCALE
1:1.5



SHEET

NV1-16

SHEET TITLE

Section - Bracket Install Guide

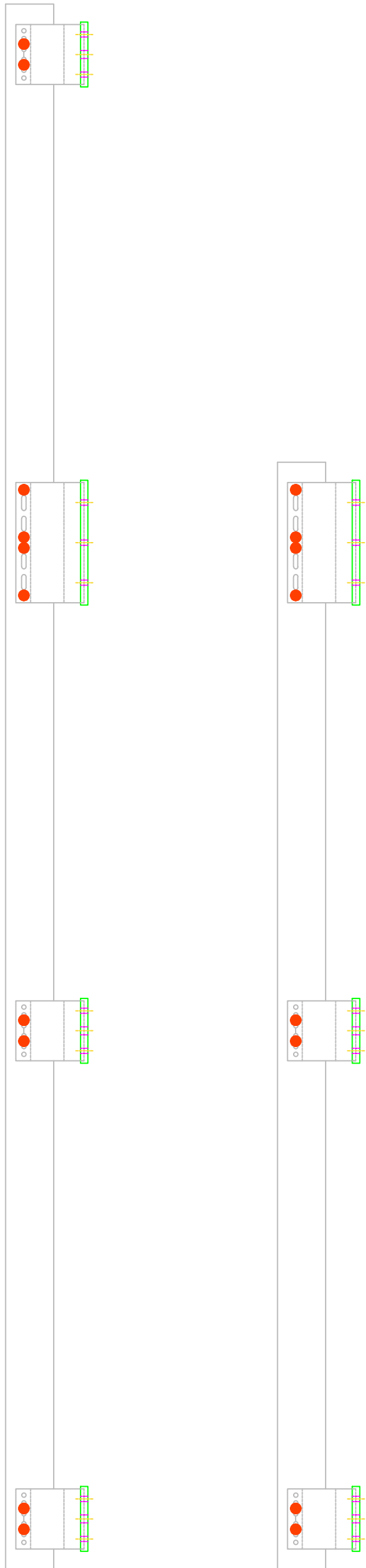


NV1 DETAIL SET


REVISION
IR

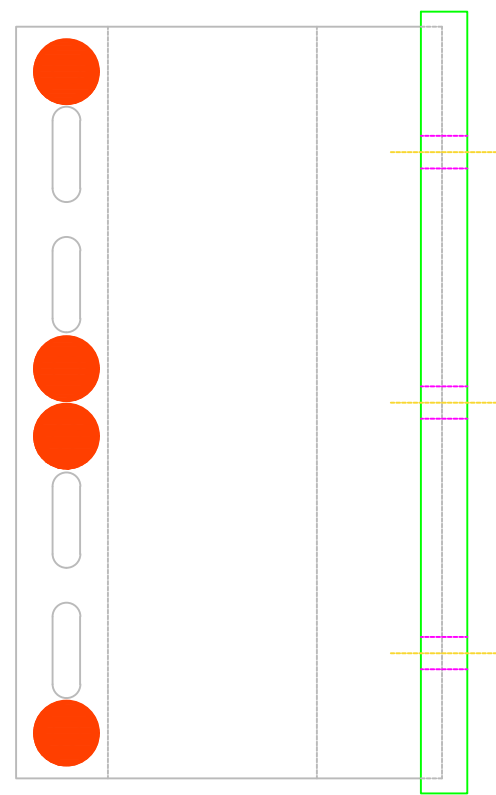
DATE
03.23.2022

SCALE
NTS

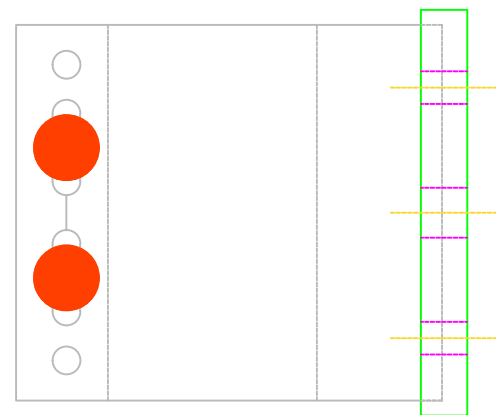


Typical Rail Configurations

 SDA5-5.5-22 Rail Fastener



Fixed Point



Sliding Point

The following are a representation of installation best practices and are not replacements for project specific engineering. Shop drawings take precedence.