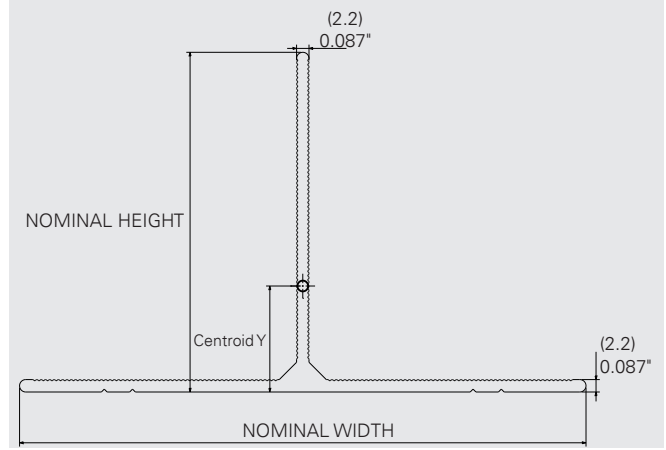
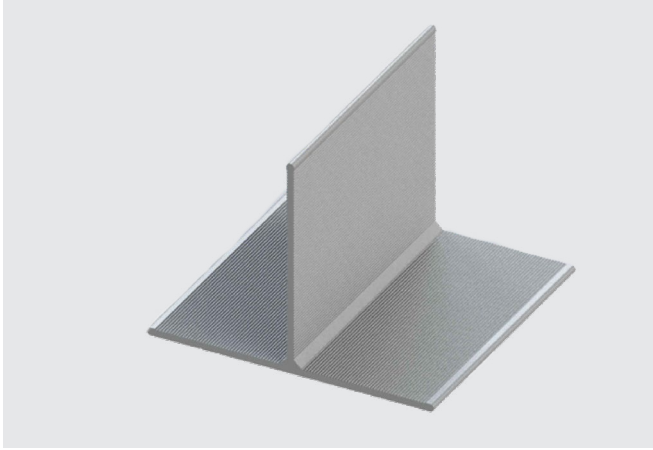


NVELOPE™ 2.2 mm T-rail



Product Selection

Material No.	Description	NAC Code	Material
1521423	T Profile 60 x 100 x 2.2 x 3000 mm (118.11")	NV-T60-100-2.2-3000	6005A-T6 Aluminum
1521434	T Profile 60 x 100 x 2.2 x 6000 mm (236.22")	NV-T60-100-2.2-6000	6005A-T6 Aluminum

*Note: Other sizes are available, please contact SFS for additional information.

Performance Data

Rail Material Properties

Young's Modulus	10,100 ksi (70 GPa)
Tensile Strength	38 ksi (260 MPa)
Shear Strength	24 ksi (165 MPa)
Tensile Yield	35 ksi (240 MPa)
Thermal Conductivity	1,310 Btu-in/ft ² -hr-°F (183 W/m-k)

Rail Section Properties

I _x	0.257 in ⁴ (107,075 mm ⁴)
I _y	0.431 in ⁴ (179,433 mm ⁴)
R _x	0.685 in (17.40 mm)
R _y	0.887 in (22.52 mm)
A	0.548 in ² (353.74 mm ²)
S _x	0.136 in ³ (2,223.5 mm ³)
S _y	0.219 in ³ (3,589.04 mm ³)