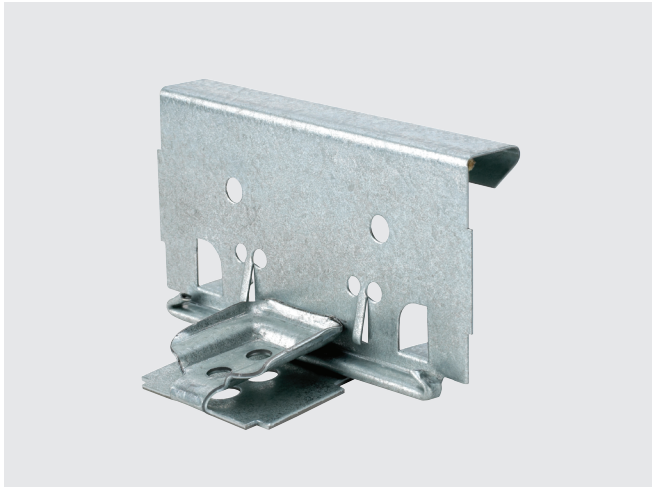


2" Float Engineered Panel Clip



Application

Standing seam panel clips used for attachment of mechanically seamed panel types wherein movement of the roof panel system is required to allow for thermal expansion and contraction

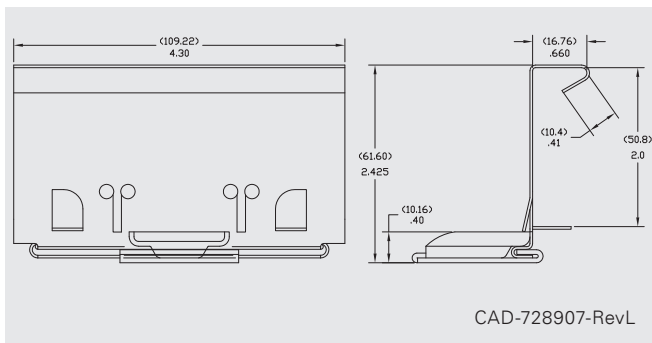
Features and Benefits

- Manufactured from high quality, corrosion resistant steel meeting strict mechanical property requirements
- Tightly controlled manufacturing tolerances for a secure and functional fit every time
- Allows limited thermal movement (determined by length of slide between the clip's top and base). Always follow the standing seam panel manufacturer's details and instructions on proper use, location and performance values of float clips as well as properly fixing of roof panels to the structure to prevent uncontrolled sliding

Product Selection

Material No.	Item	Description		Carton Wt. (lbs.)	Carton Qty.
		Base Material	Tab Material		
728907*	2" Float clip	16 ga. (1.5 mm) G-90 Galvanized	22 ga. (0.8 mm) G-90 Galvanized	21	80
747235*	2" Float clip	16 ga. (1.5 mm) G-90 Galvanized	22 ga. (0.8 mm) 304SS	21	80

*Sealant applied.



Specifications

Height:	2.425" (61.60 mm)
Width:	4.30" (109.22 mm)
Holes:	2-hole

Installation and Application Considerations

- Compatible with:
 - Knudson KR24
- Refer to SFS standing seam fastener offering for panel clip attachment options
- Always consult with panel manufacturer or design engineer to ensure proper clip recommendations