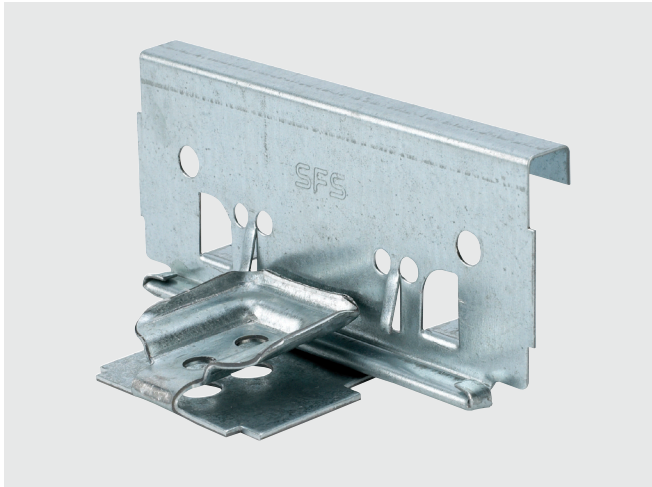


# 2" Float Engineered Panel Clip



## Application

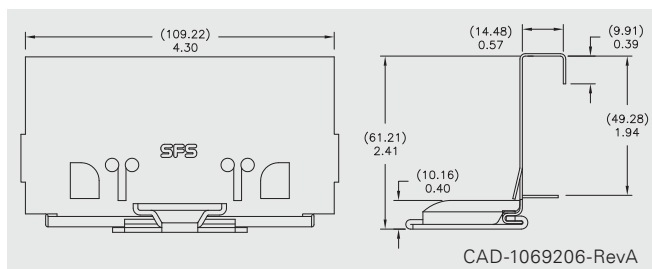
Standing seam panel clips used for attachment of mechanically seamed panel types wherein movement of the roof panel system is required to allow for thermal expansion and contraction

## Features and Benefits

- Manufactured from high quality, corrosion resistant steel meeting strict mechanical property requirements
- Tightly controlled manufacturing tolerances for a secure and functional fit every time
- Allows limited thermal movement (determined by length of slide between the clip's top and base). Always follow the standing seam panel manufacturer's details and instructions on proper use, location and performance values of float clips as well as properly fixing of roof panels to the structure to prevent uncontrolled sliding

## Product Selection

Material No.	Item	Description		Carton Wt. (lbs.)	Carton Qty.
		Base Material	Tab Material		
1069206	2" Float clip	16 ga. (1.5 mm) G-90 Galvanized	22 ga. (0.8 mm) G-90 Galvanized	19	80
1142738	2" Float clip	16 ga. (1.5 mm) G-90 Galvanized	24 ga. (0.6 mm) G-90 Galvanized	19	80
1069993	2" Float clip	16 ga. (1.5 mm) G-90 Galvanized	22 ga. (0.8 mm) 304SS	19	80
1257445	2" Float clip	16 ga. (1.5 mm) G-90 Galvanized	26 ga. (0.5 mm) 304SS	19	80
1233451	2" Float clip	18 ga. (1.2 mm) G-90 Galvanized	26 ga. (0.5 mm) 304SS	19	80
1318408	2" Float clip	16 ga. (1.5 mm) 304SS	24 ga. (0.6 mm) 304SS	19	80
1213935	2" Float clip	16 ga. (1.5 mm) 304SS	26 ga. (0.5 mm) 304SS	19	80



## Specifications

Height: 2.41" (61.21 mm)  
Width: 4.30" (109.22 mm)  
Holes: 2-hole

## Installation and Application Considerations

- Compatible with:
  - Quadro 2" Mechanical
- Refer to SFS standing seam fastener offering for panel clip attachment options
- Always consult with panel manufacturer or design engineer to ensure proper clip recommendations