

NH3

Installation

guide

Component guide

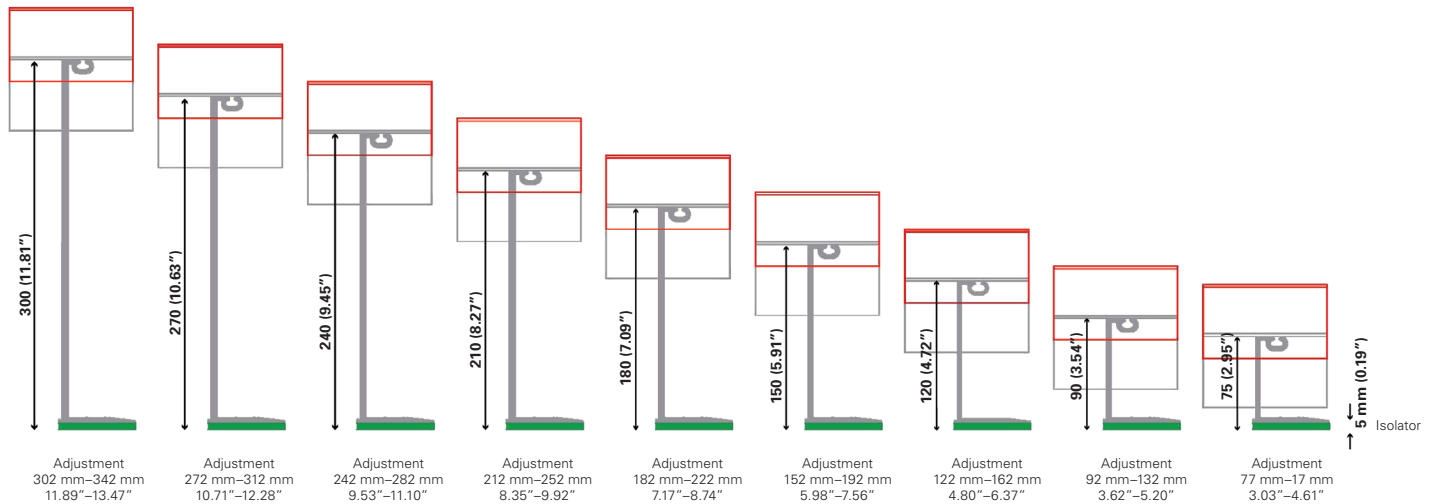
NVELOPE rainscreen cladding brackets and framework simplify the complexity of installing façades. The NVELOPE NH3 system is designed to provide a horizontal support for most façade types. NVELOPE purpose-designed brackets allow for final alignment and adjustment.

Brackets

The substrate slot variations on NVELOPE NH3 brackets are to suit a wide range of substrate materials. For steel and timber substrates 6.5 mm slots are used; for brick, block and concrete, the 11 mm slots are used.

Bracket Size	Min system		Max system		6.5 mm	11 mm
	(mm)	(in)	(mm)	(in)		
75	77	3.03"	117	4.61"	1602052	1602050
90	92	3.62"	132	5.20"	1602054	1602053
120	122	4.80"	162	6.37"	1602057	1602056
150	152	5.98"	192	7.56"	1602059	1602058
180	182	7.17"	222	8.74"	1602062	1602061
210	212	8.35"	252	9.92"	1602064	1602063
240	242	9.53"	282	11.10"	1602066	1602065
270	272	10.71"	312	12.28"	1602068	1602067
300	302	11.89"	342	13.47"	1602070	1602069

Cavity depths



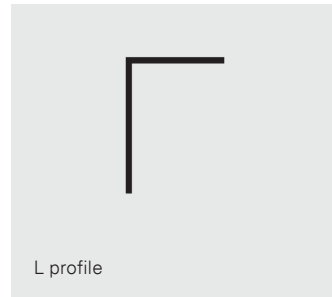
Component guide

Profiles

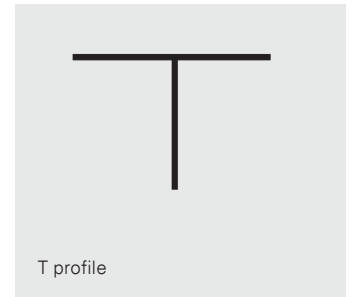
Generally, profiles are cut to lengths that reflect the width of the panels that are going to be fastened to them. Typically profiles are cut so that the panels are located on one set of horizontal profiles and do not 'bridge' the expansion gap between two profiles.

These are secured to the bracket using a secondary fastener.

SFS is able to offer an optimized solution, minimizing wastage on site by cutting profiles to length in our factory and delivering precut ready to install directly to the project.



L profile



T profile

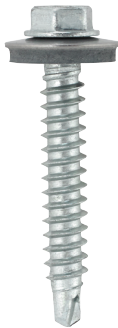
Type	Dimensions	Material number
L Profile	60 x 40 x 2.2 x 3000 mm (118.11")	1521357
L Profile	60 x 40 x 2.2 x 6000 mm (236.22")	1521375
T Profile	40 x 100 x 2.2 x 3000 mm (118.11")	1521413
T Profile	40 x 100 x 2.2 x 6000 mm (236.22")	1521417
T Profile	60 x 80 x 2.2 x 3000 mm (118.11")	1521418
T Profile	60 x 80 x 2.2 x 6000 mm (236.22")	1521422
T Profile	60 x 100 x 2.2 x 3000 mm (118.11")	1521423
T Profile	60 x 100 x 2.2 x 6000 mm (236.22")	1521434
T Profile	60 x 120 x 2.2 x 3000 mm (118.11")	1521440
T Profile	60 x 120 x 2.2 x 6000 mm (236.22")	1521444
T Profile	60 x 140 x 2.2 x 3000 mm (118.11")	1521445
T Profile	60 x 140 x 2.2 x 6000 mm (236.22")	1521447

Primary fasteners

BMSD2-#14x2
1673590



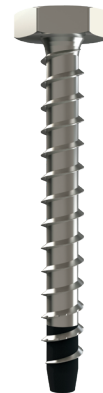
SXW-S16-6,5x52
1123138



TCS-3/8x3"-304SS
1677827



MMS-Plus-SS-10x80
1204995



Secondary fasteners

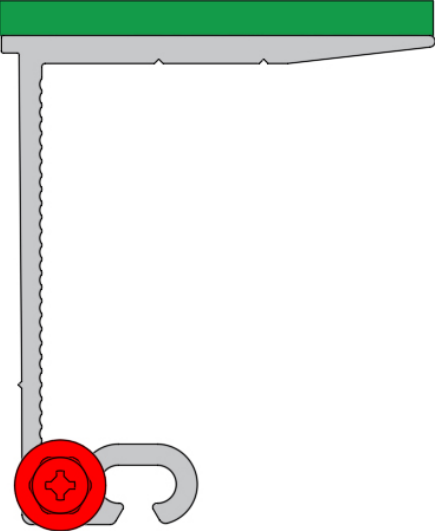
SDA5/5.5x45
1645134



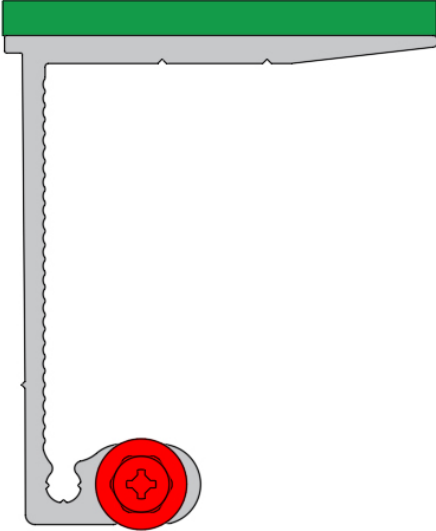
*fastener images not to scale

Fixed and sliding point guide

Fixed point



Sliding point



Installation guide

1. Orient the bracket correctly

Ensure you have the correct bracket slot sizes to suit your substrate; the NH3 bracket is available with 6.5 mm or 11 mm slots. The bracket should be installed with the rail slot towards the top of the bracket, take care to ensure the bracket is the correct orientation before fastening to the substrate. The NH3 bracket should only be used with the rail slots positioned at top of bracket.



2. Install substrate fasteners

Install substrate fasteners ensuring both slots are used, by locating the fasteners in the center of the slots; this allows the bracket to be adjusted for line and level before the rail is installed.



3. Select the correct profile

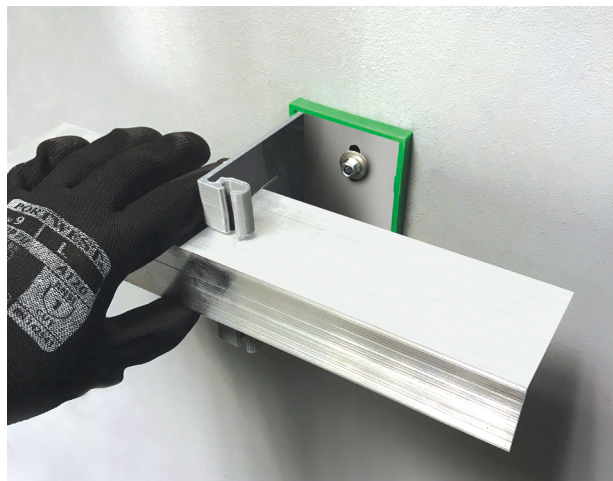
The NH3 system is compatible with both L and T profiles. Select an appropriate profile based upon the attachment and panel requirements.



Installation guide

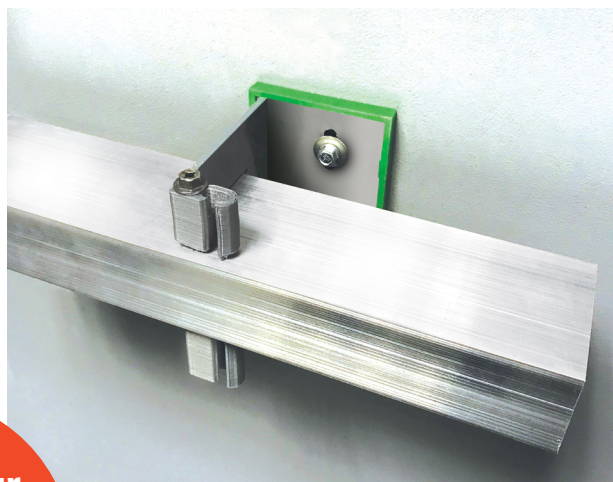
4. Insert profile

Insert the L or T profile into the helping hand rail slot and adjust for line and level double checking the correct maximum rail distance from the last bracket.



5. Install secondary fastener

Install the SDA5/5.5x45 rail fastener closely observing the correct fixed and sliding locations. For further information please refer to the fixed and sliding point guide (page 4), or contact our technical team.



**Contact our
technical team:
844-NVELOPE
(683-5673)**

Forest Gate Community School
Using the NVELOPE NH3 Horizontal Bracket





US	Canada
T 844 NVELOPE	T 866 847 5400
(844 683 5673)	ca.sfs.com
us.sfs.com	

All information is non-binding and without guarantee. Before using the products, all specifications and calculations must be checked by a suitably qualified person and local regulations must be observed. This document is subject to revision. We reserve the right to make technical changes.