



# NH3 horizontal system



**Speed, simplicity & strength**

# Speed, simplicity & strength

**NVELOPE NH3 is a framing system used to support vertical and horizontal cladding applications. Allowing for varied façade design options and capable of larger spans to suit the cladding layout without the need for an adapter. This product also uses 80% fewer fasteners than previous NVELOPE horizontal systems. NH3 is exceptionally strong and can accommodate high vertical loads. Simple, Speedy and Strong.**

---

#### **Benefits:**

- Fast to install
- Easy to install
- Cost effective
- Compact system covering full cladding spanning range
- Versatility and high load capacity per bracket
- Fewer fasteners saves time and money
- Suitable for steel, timber, concrete and masonry
- SFS fasteners provide a fully warranted system
- Cutting service available to save time and waste on site

---

#### **Material:**

Manufactured from extruded 6005A T6 aluminum alloys conforming to EN 573-3 material and EN 755 production standards.

#### **Approvals:**



# Speed

## 80% fewer fasteners than NH2

The new NH3 system needs just 3 fasteners which means it is quick to install, getting the job done faster and saving you time and money.

## Fast adjustment for line and level

Easy and simple design allows for fast easy alignment. Vertical levels can be easily and speedily achieved thanks to the slotted primary fastening holes. The clever helping hand slot enables the L and T profile to be aligned, and then secured, using just one fastener per bracket.

## Overlay and optimized cutting service

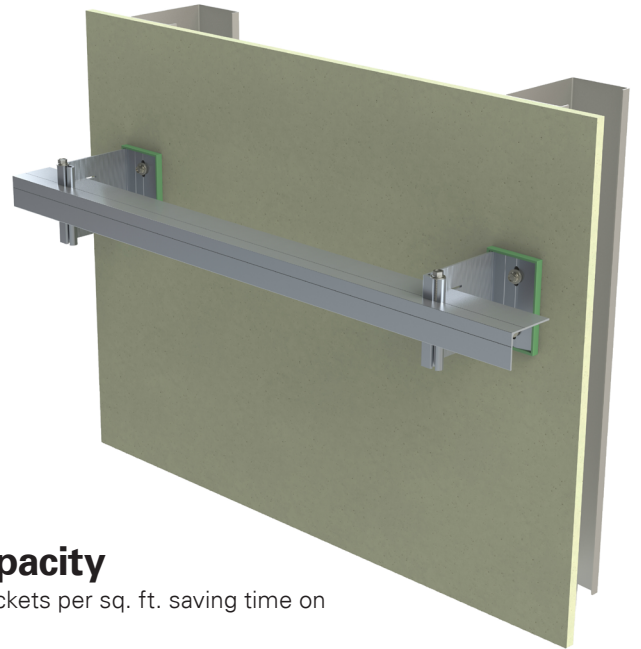
The NH3 system further improves efficiencies through the overlay and optimized cutting service – reducing time and material waste on site by cutting rails to the specific lengths you need.

## Less brackets per sq. ft. due to high load capacity

The high load capacity of the NH3 system can reduce the number of brackets per sq. ft. saving time on installation and materials.

## Pre-installed isolator

The NH3 bracket is supplied with a pre-fitted isolator, meaning there is no need to find and attach the isolator prior to installation – saving you time and money.



# Simplicity

## One piece bracket

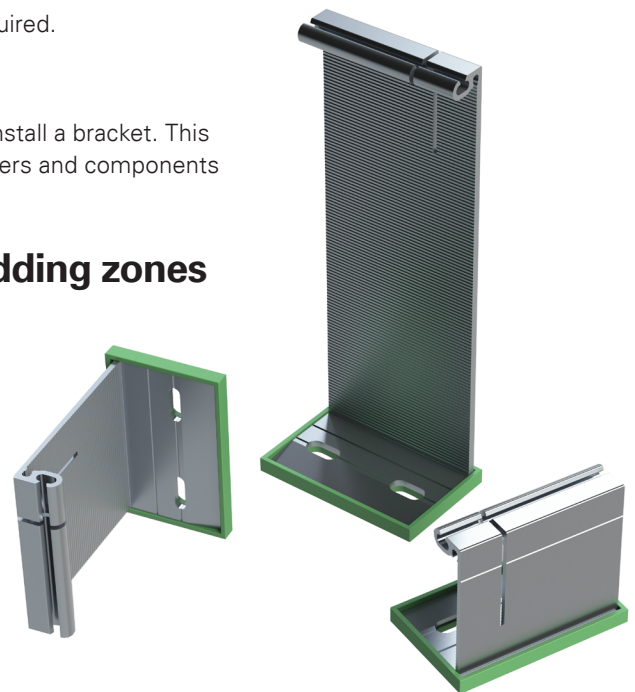
The elegant design means that, unlike the NH2 system, no adapter is required.

## Only 4 components for install

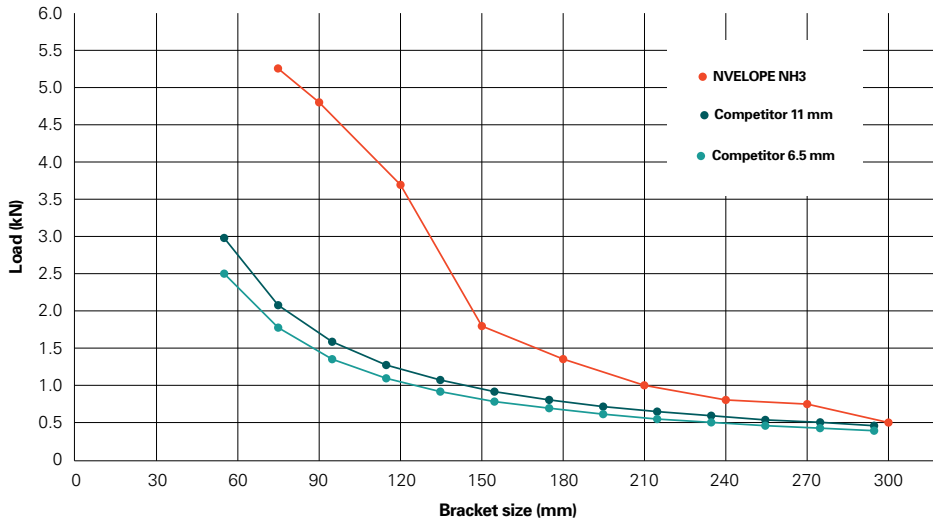
This simple design means that there are only 4 components required to install a bracket. This makes installing the system easy and fast. No hunting for different fasteners and components makes inventory on site much easier to control.

## Only 9 brackets to span the full range of cladding zones

The full range of cladding spanning ranges can be accommodated by just 9 bracket lengths. This is one of the most compact bracket length ranges on the market that is capable of spanning from 77 mm to 342 mm (3.03"–13.47"). This means less complexity and greater flexibility during the design phase.



# Strength



## Exceptional vertical loading across the full range of spanning zones

The high load capacity of the NH3 system brackets provides exceptional reassurance when attaching high mass façades.

This high load capacity also enables efficient bracket layout designs which realize fewer brackets per sq. ft., leading to savings on time and cost.

## Made from durable extruded aluminium

The NVELOPE product range is manufactured from 6005A T6 grade aluminum which provides exceptional strength and durability.

## Fixed and sliding fastening points

Unlike other systems which use just fixed points to attach the profile, the NVELOPE NH3 system has been designed to utilize both fixed and sliding fixing points. By utilizing this method the normal expansion and contraction that occurs within the rainscreen and subframe can be accommodated reducing the risk of buckling or warping of the façade.

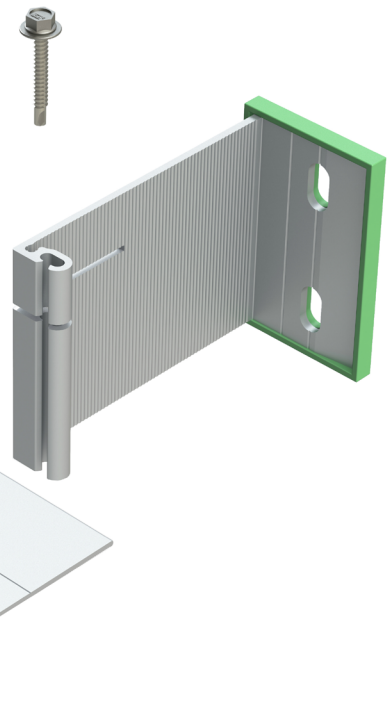
# Product overview

The NH3 bracket is secured to the substrate: either steel frame, block work, or timber. The bracket's helping hand slot is then ready to receive an L or T profile.

The profile can be adjusted for line and level, and secured using a fastener in the correct fixed or sliding point position in the bracket slot, to allow for expansion and contraction.

For detailed installation instructions, please see our NH3 Installation Guide.

**Range of adjustment:  
77–342 mm  
(3.03")–13.47")**





US  
T 844 NVELOPE  
(844 683 5673)  
us.sfs.com

Canada  
T 866 847 5400  
ca.sfs.com

All information is non-binding and without guarantee. Before using the products, all specifications and calculations must be checked by a suitably qualified person and local regulations must be observed. This document is subject to revision. We reserve the right to make technical changes.