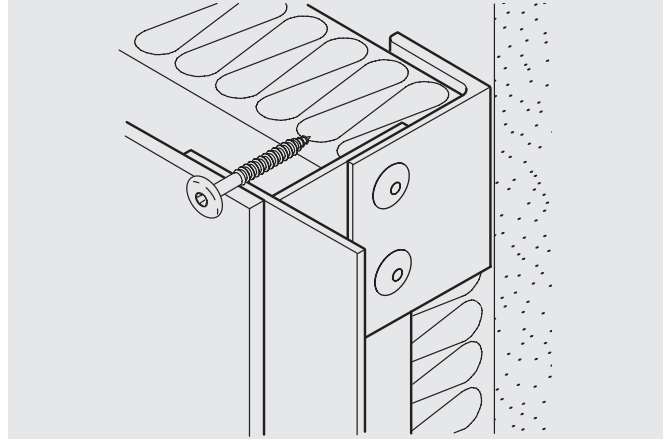


TW-S-D13

Fundermax Max Compact panel to metal



Features and Benefits

- 304 Stainless steel provides maximum corrosion resistance.
- Low profile drive head for aesthetically pleasing appearance.
- Color matched Vista spray available to blend with facade panel.

Application

Fundermax Max Compact exterior panels to metal

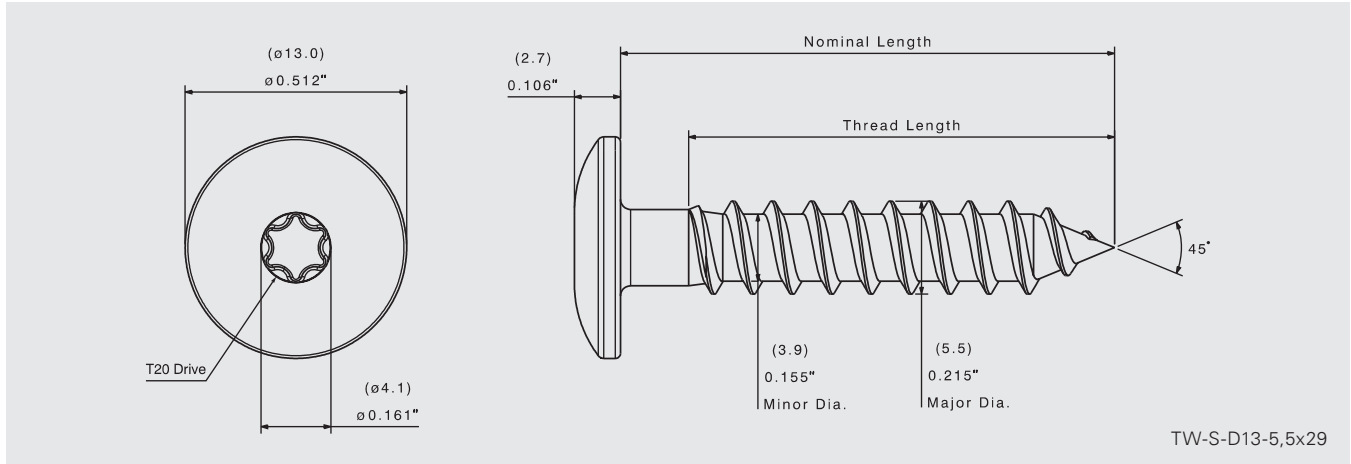
Product Selection

Material No.	Fastener Length		Thread Length*		Description	Carton Wt. (lbs.)	Carton Qty.
	(in)	(mm)	(in)	(mm)			
705260	1"	25	13/16"	21	TW-S-D13-5.5x25	2.6	250
759330	1-1/8"	29	1"	25	TW-S-D13-5.5x29	3.0	250
705261	1-1/2"	38	1-5/16"	34	TW-S-D13-5.5x38	3.6	250

*Note - Thread length measured from tip of the drill point to end of threads.

TW-S-D13

Fundermax Max Compact panel to metal



Product Specifications

Diameter:	#12	Drive:	T20W
Threads Per Inch:	11	Drill Point:	Type A
Head Style:	0.512" (13 mm) Dome Head	Thread Major Dia:	0.215" (5.5 mm)
Material:	304SS	Thread Minor Dia:	0.155" (3.9 mm)

Performance Data^{1,2}

Material Strength

Tensile	2144 lbf / 9537 N
Shear	2200 lbf / 9786 N
Torsional	65 lbf-in / 7.3 N·m

Pull Out Strength Steel

16 Ga (1.5 mm)	637 lbf / 2834 N	Pre-Drill	3/16" (4.8 mm)
-----------------------	------------------	------------------	----------------

Pull Out Strength Aluminum

1/8" (3.2 mm)	1157 lbf / 5147 N	Pre-Drill	#19 (4.23 mm)
1/4" (6.4 mm)	1800 lbf / 8007 N		13/64" (5.16 mm)

¹ Pull out values based on 55 ksi cold formed sheet steel.

² Strengths are nominal values.

Installation and Application Considerations

Tools: 0–1000 rpm screw gun equipped with depth sensing nose piece.

Fastener length should provide for a minimum of 3/16" penetration of fully developed threads into metal substrate.

Use of impact guns or hammer drills is not recommended.